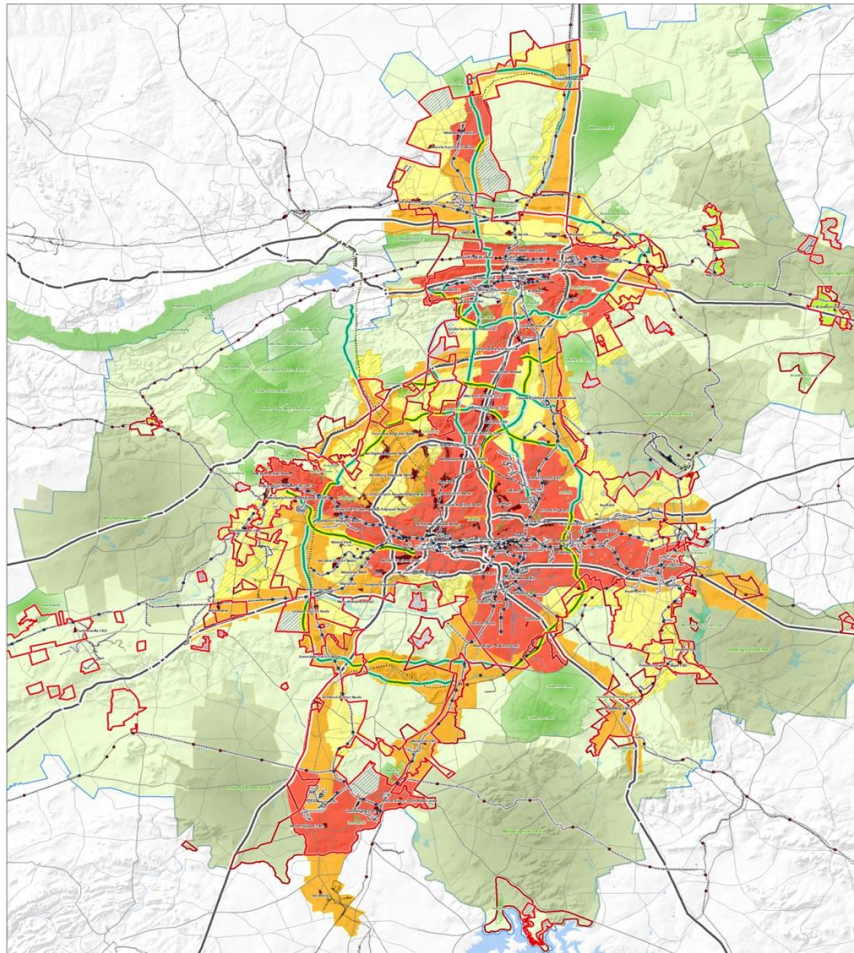


CITIES ROLE IN PROMOTING AIR TRANSPORT



Gauteng Spatial Development Framework

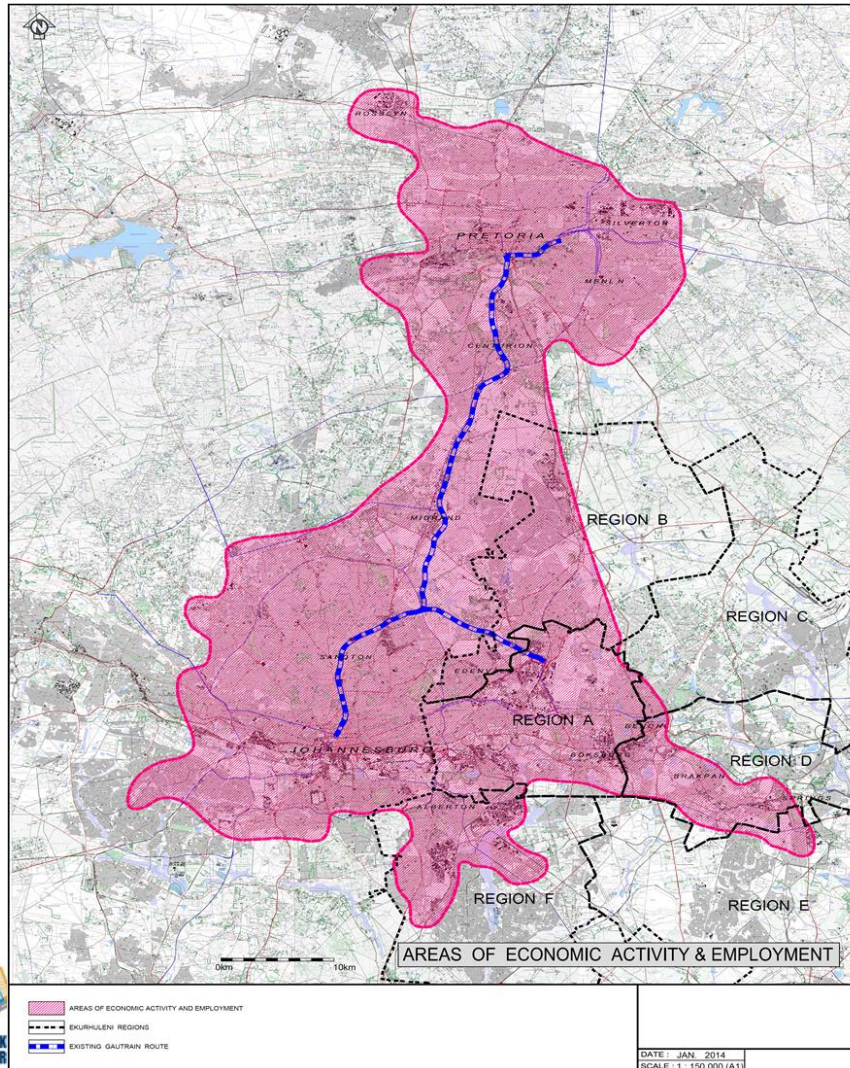


- Rail network
- Strategic Rail connectors
- Gautrain Rapid Rail
- Strategic Road connectors - New
- Strategic Road connectors - Upgrade
- Passenger Ring Rail
- Freeway and Primary
- Secondary
- Tertiary
- Urban nodes
- Protected Areas/Natural Systems
- Urban consolidation zones
- Future urban consolidation within the urban edge
- Rural centres
- Existing Residential Estates
- Current urban expansion proposals subject to review
- Designated Agricultural Hubs
- Extensive general agricultural hinterland
- Waterbodies
- Future corridors
- Urban development corridors
- Anticipated extend of urban development by 2055*
- Existing mining settlements



Gauteng City Region Core Economy

Favourably located in the Economic Activity and Employment Area of the Gauteng Province.



STATUS QUO: VITAL STATISTICS



| Population | 2011 | 2015 | 2025 |
|-------------------------|---|-----------|------------------|
| | 3 178 470 | 3 358 474 | 3 687 961 |
| Total area | 197 549ha | | |
| Urban area | 41 934ha | | |
| Agricultural area | 97 540ha | | |
| Open space area | 9 596ha | | |
| Roads and road reserves | 48 479ha | | |
| Capacity for growth | Number of people in present urban structure @ 20% densification ratio | | 4 030 167 |
| | Number of people in Greenfields developments @ 20u/ha (gross) | | 2 071 854 |
| | TOTAL | | 6 102 021 people |

STATUS QUO: VITAL STATISTICS



DEMOGRAPHICS

Ekurhuleni
3 178 470 (2011)



Gauteng
12 272 263 (2011)



National
51 770 560 (2011)



Area

1.975 km²

18 178 km²

1 221 037 km²

Ppl/Km²

1 609.4 ppl/km²

675.1 ppl/km²

42.1 ppl/km²



1 015 465
Households
in
Ekurhuleni

3 909 022

14 450 161

Households



Annual per household income

R163 676

R 180 843

R 143 599

Income

Unemployment rate
official definition (%)

28.8%

26.4%

29.8%



Percentage of persons in poverty

28.2%

26.2%

37.7%

Poverty

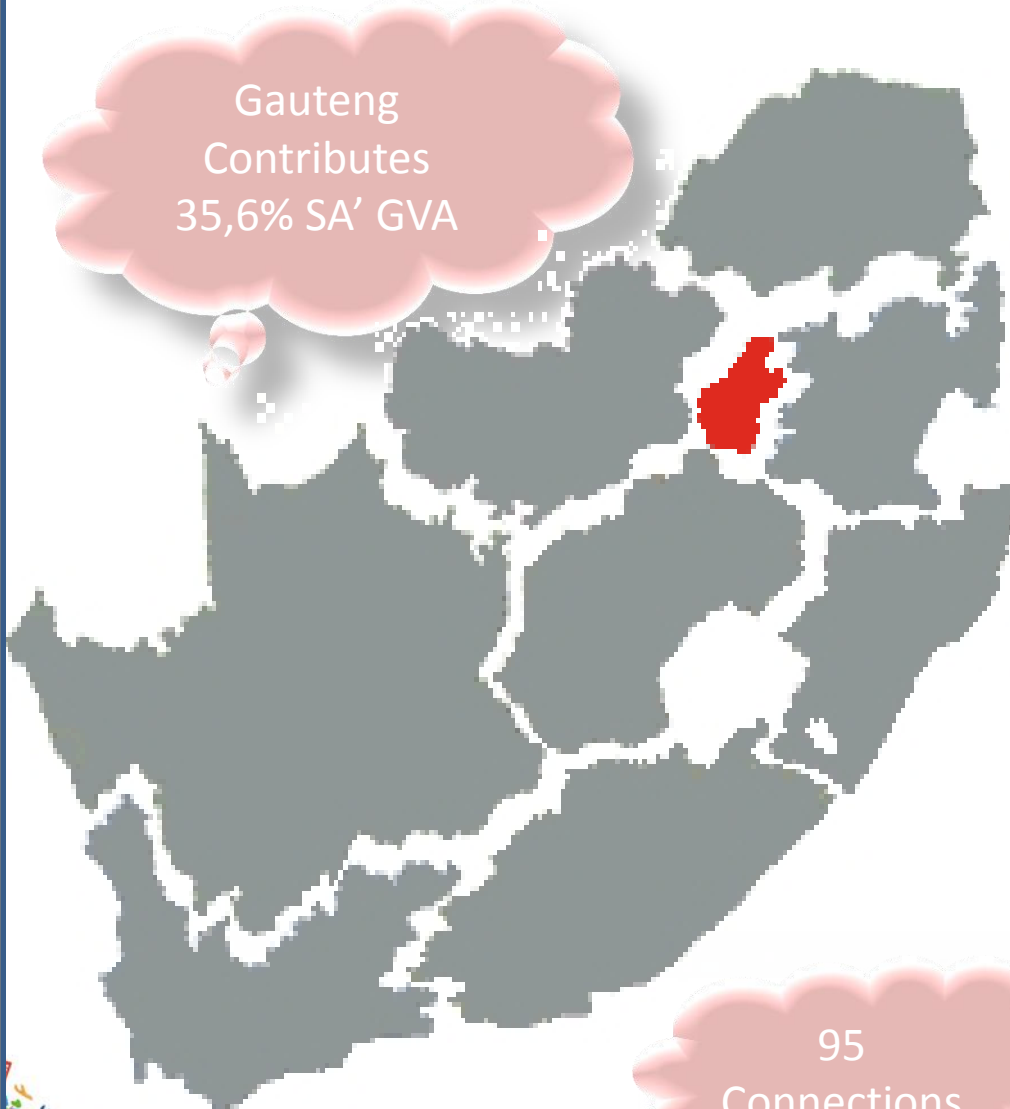
CONNECTIVITY



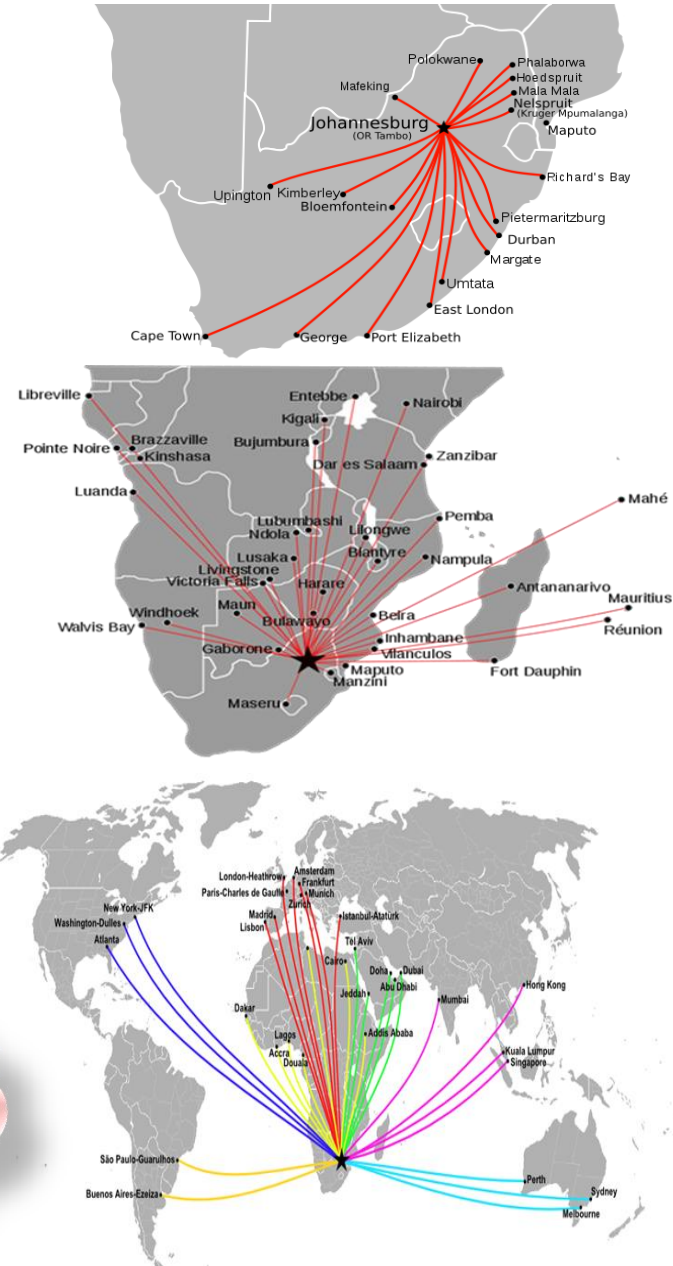
Global connectivity

SA' Ranked 43rd for Ease of Doing Business (2015)

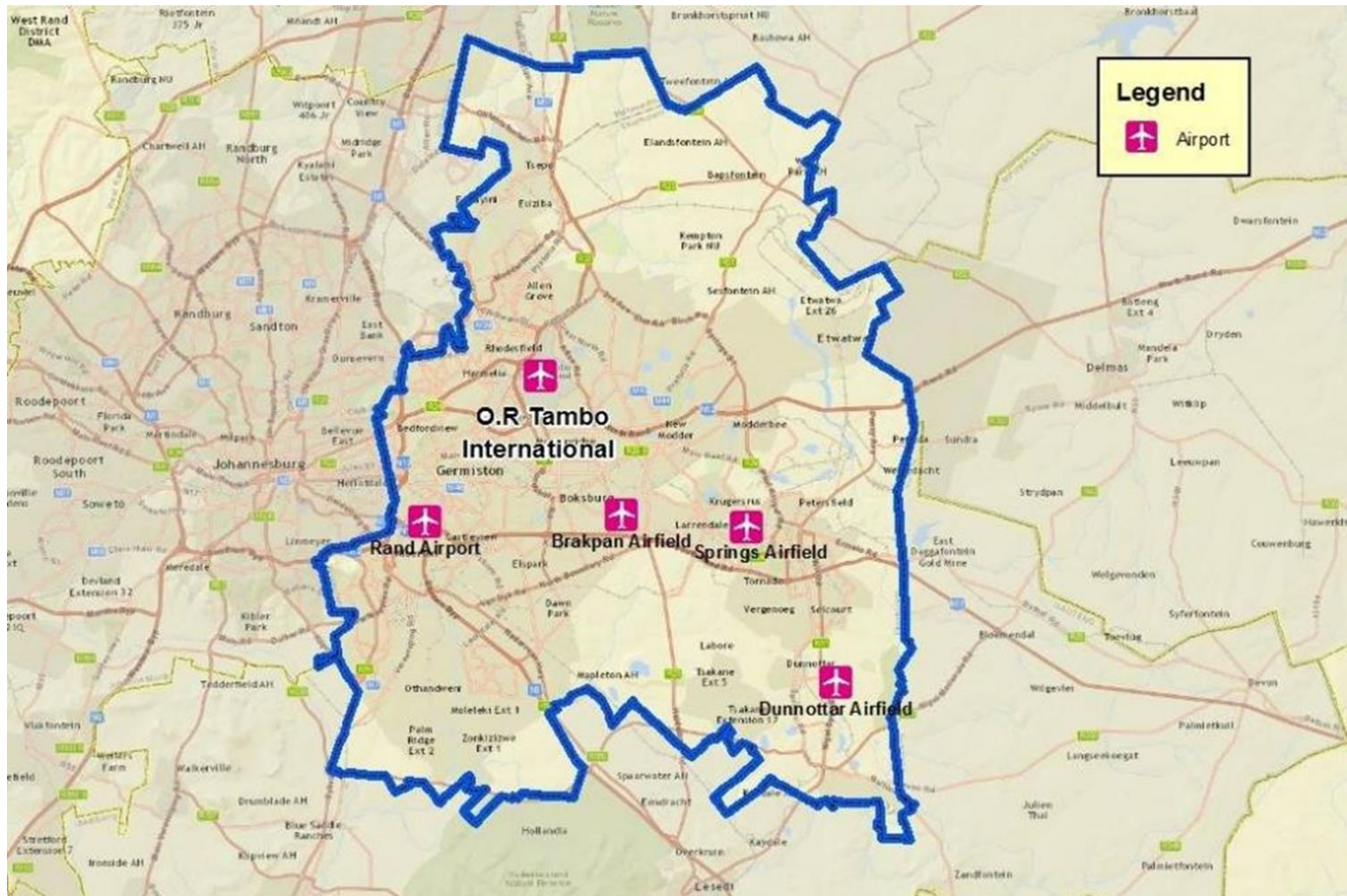
Gauteng
Contributes
35,6% SA' GVA



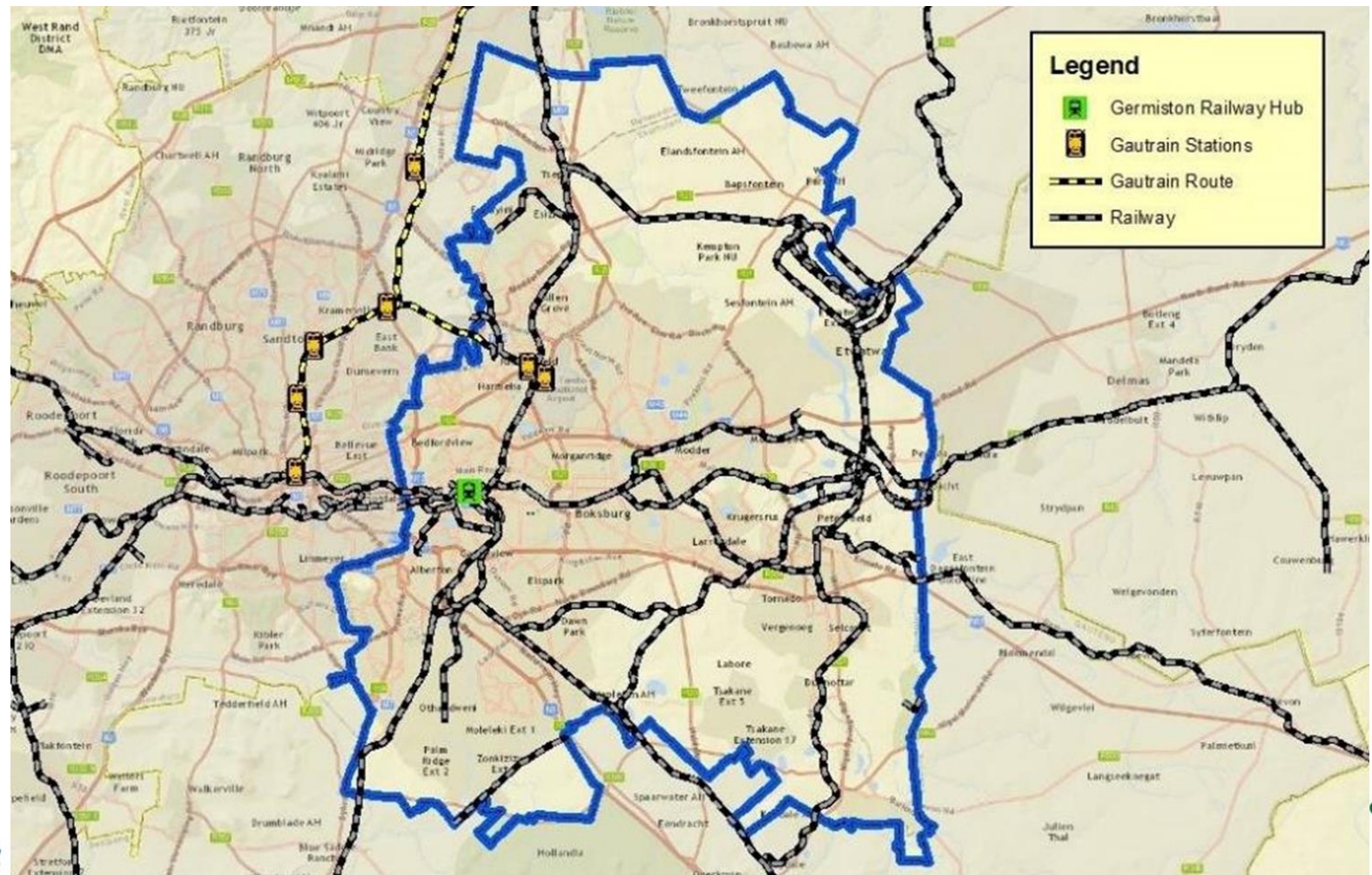
95
Connections



Ekurhuleni aviation capability



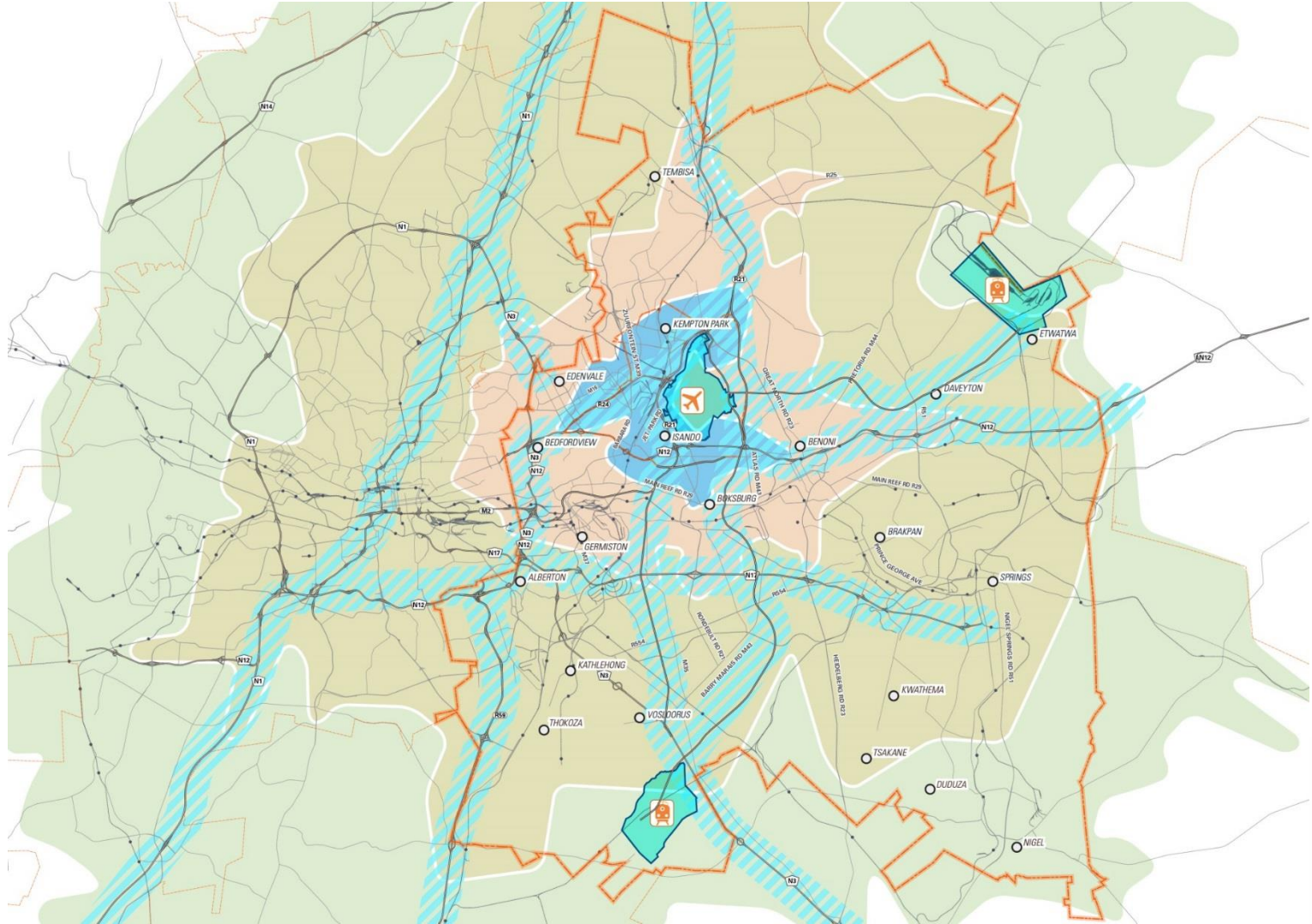
Ekurhuleni railway capability



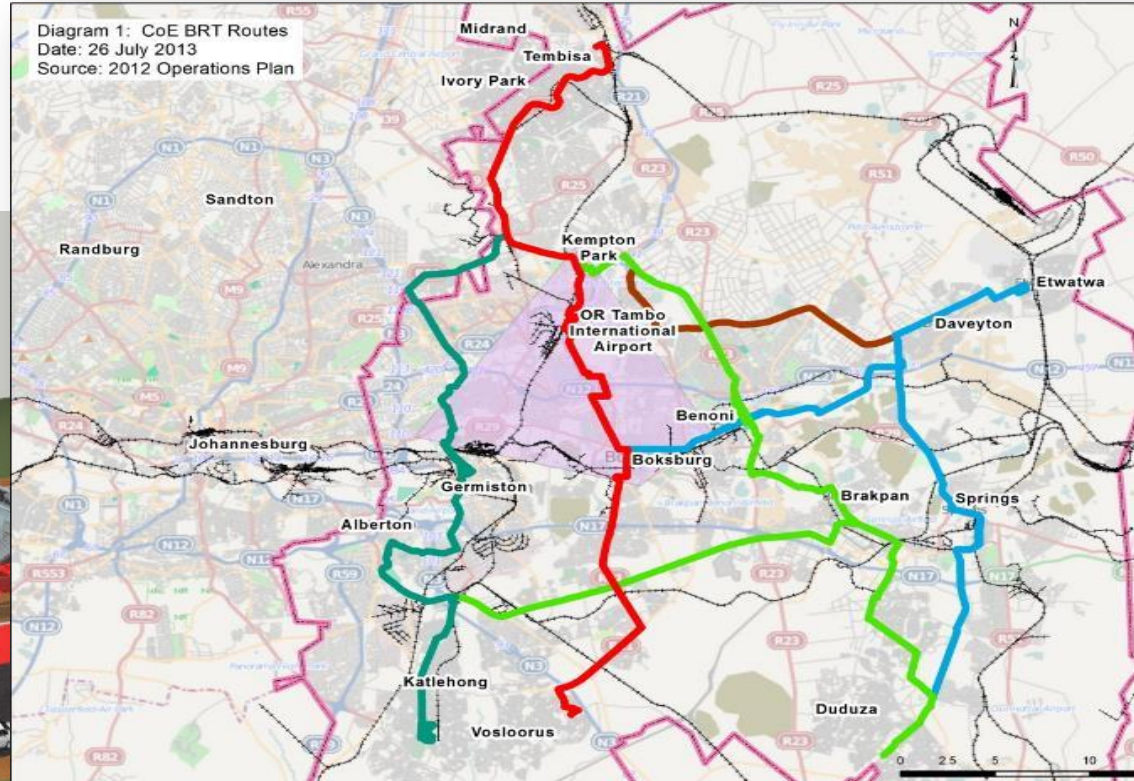
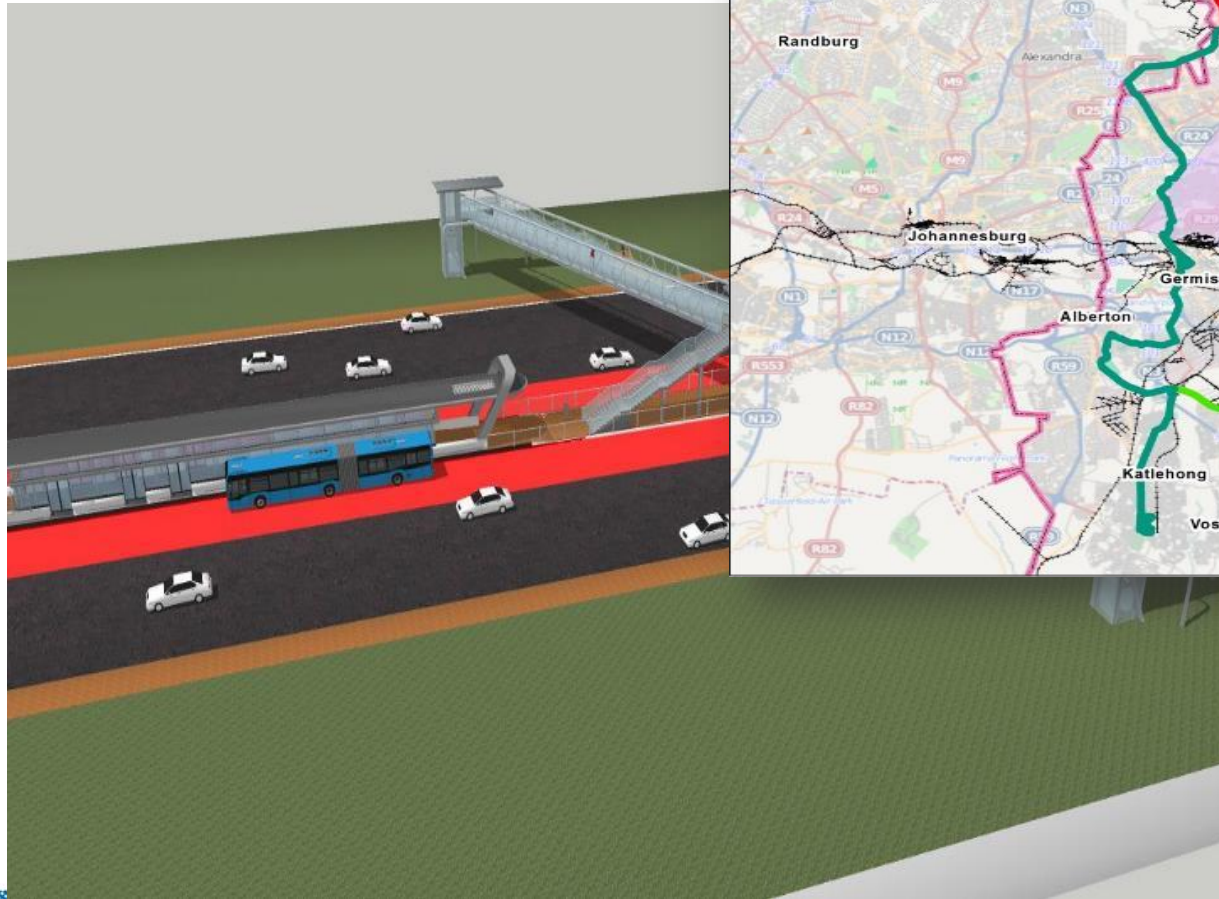
Connectivity at O.R. Tambo



Corridors and concentricity



Integrated Rapid Public Transport Network



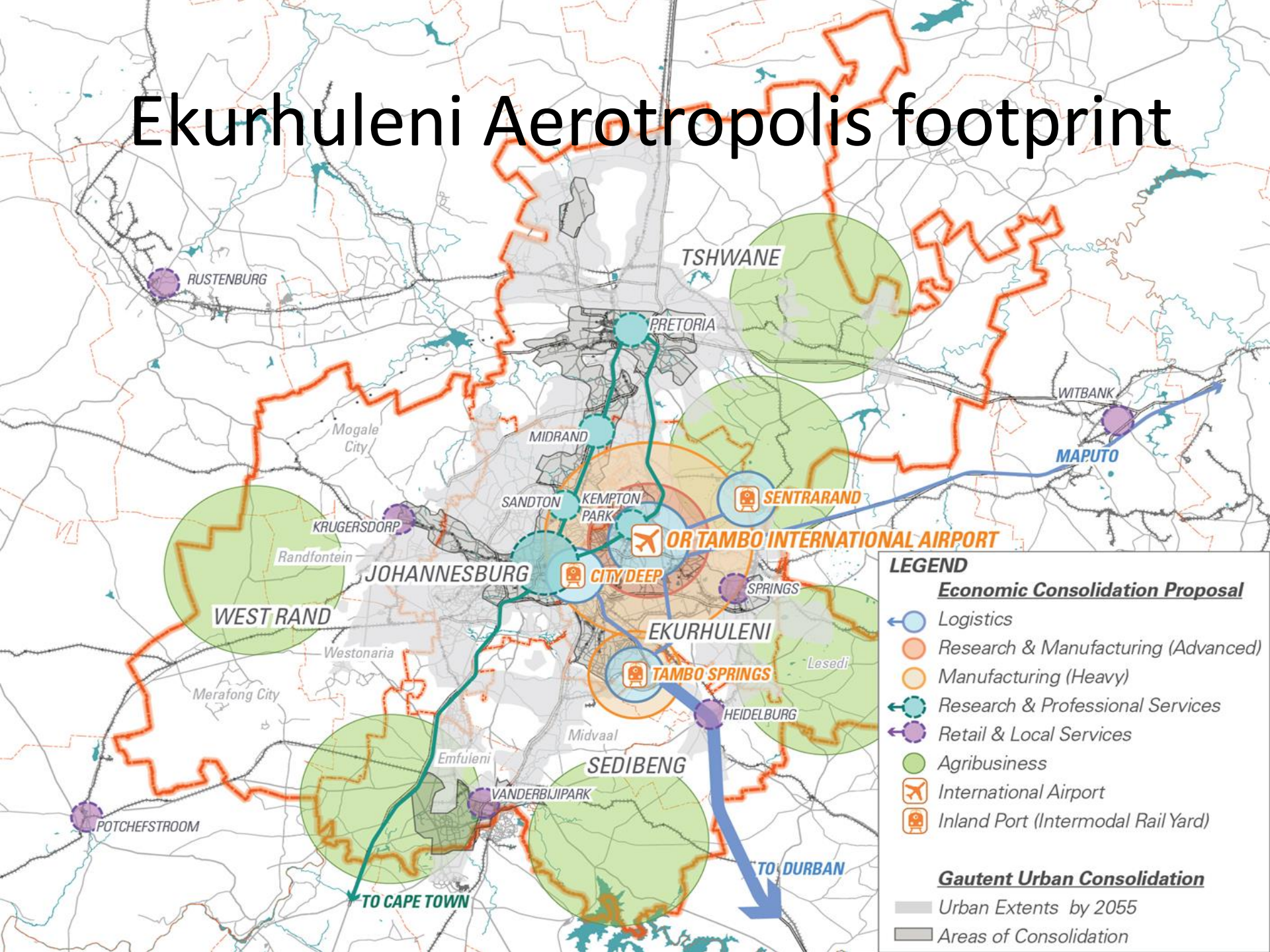
AEROTROPOLIS





Growth and Development Strategy 2055

Ekurhuleni Aerotropolis footprint



AEROTROPOLIS ECONOMIC DEVELOPMENT

TARGETED ECONOMIC
CLUSTERS

ECONOMIC DISTRICTS

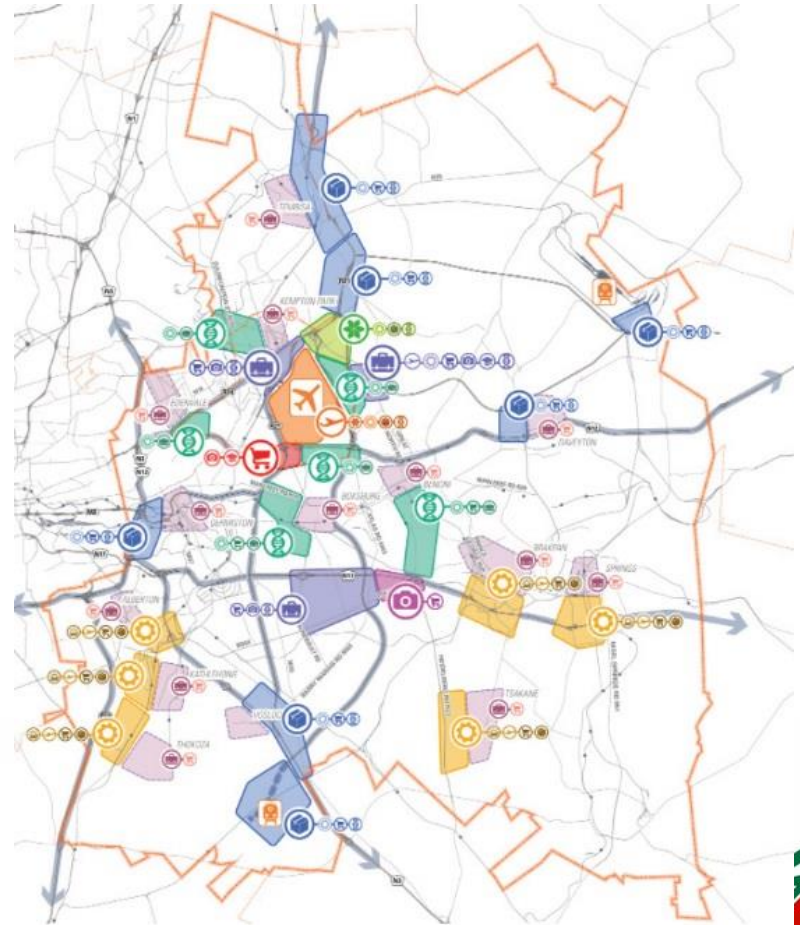
TIME-DISTANCE

DEVELOPMENT
SCENARIOS

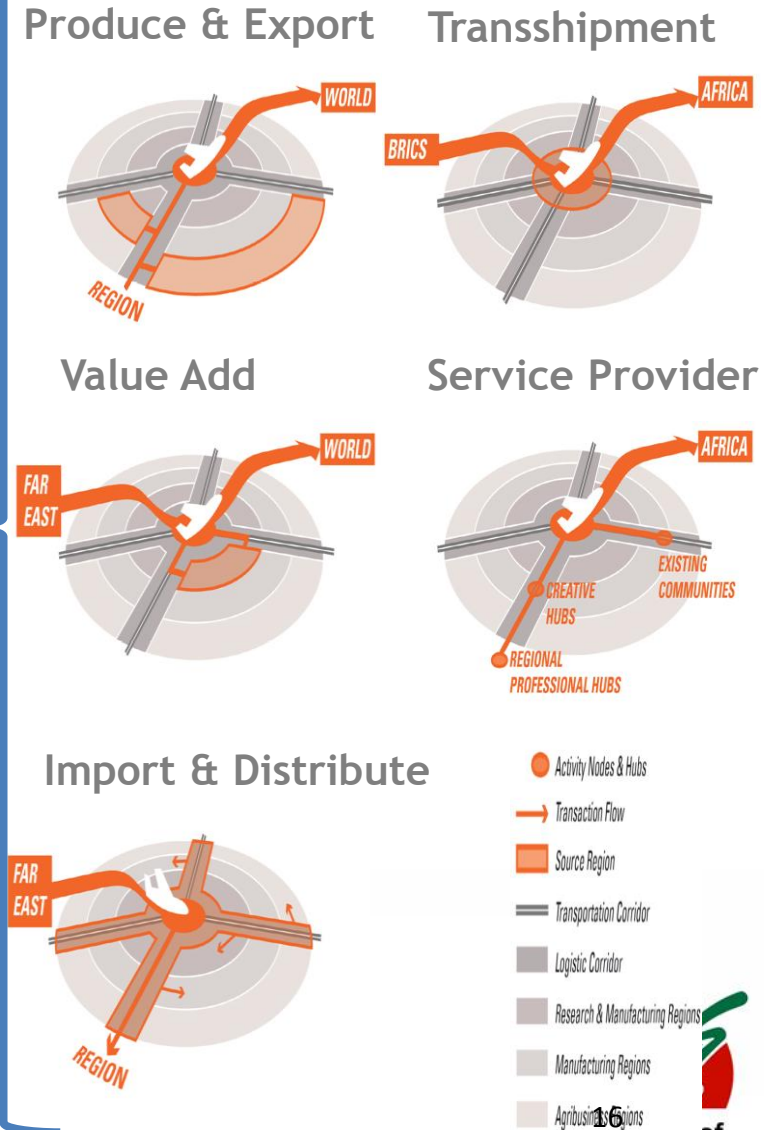
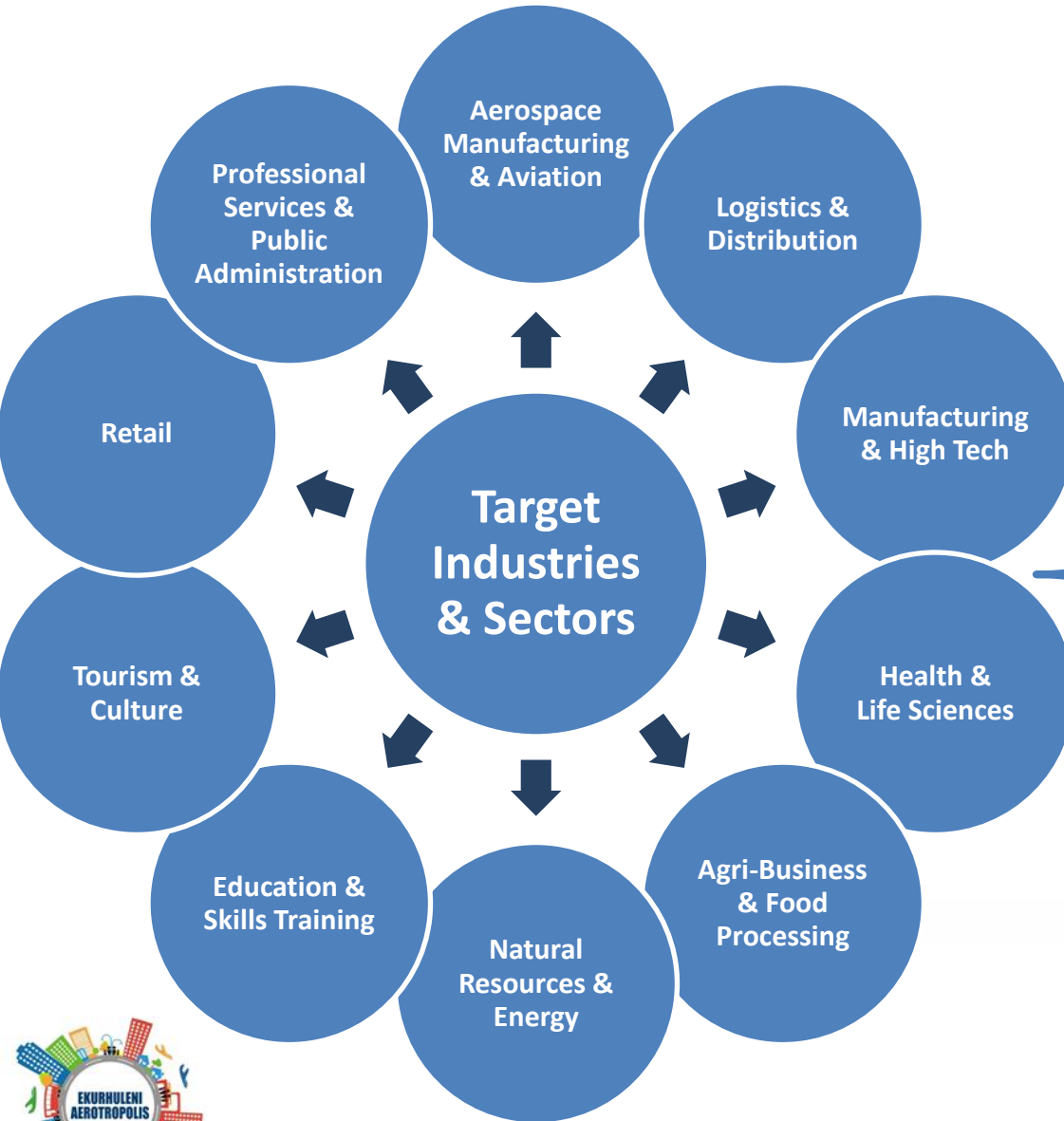
CATALYST PROJECTS

ENABLING
TRANSPORTATION

AEROTROPOLIS LAND USE PLANNING



Aerotropolis economic opportunities



WHAT ARE THE RIGHT SPATIAL POLICIES FOR AN EKURHULENI AEROTROPOLIS?

1 STRONG COHESIVE
COMMUNITIES



2 SOCIAL & ECONOMIC
PARTICIPATION



3 LEADERSHIP &
PARTNERSHIP



4 ENVIRONMENTAL
RESILIENCE



5 POLYCENTRIC CITY LINKED
TO REGIONAL CENTRES



6 GLOBALLY CONNECTED
DESTINATION



7 INVESTMENT THAT
SUPPORTS CITY GROWTH



8 DISTINCTIVE SOUTH
AFRICAN AEROTROPOLIS



Spatial Policy Alignment

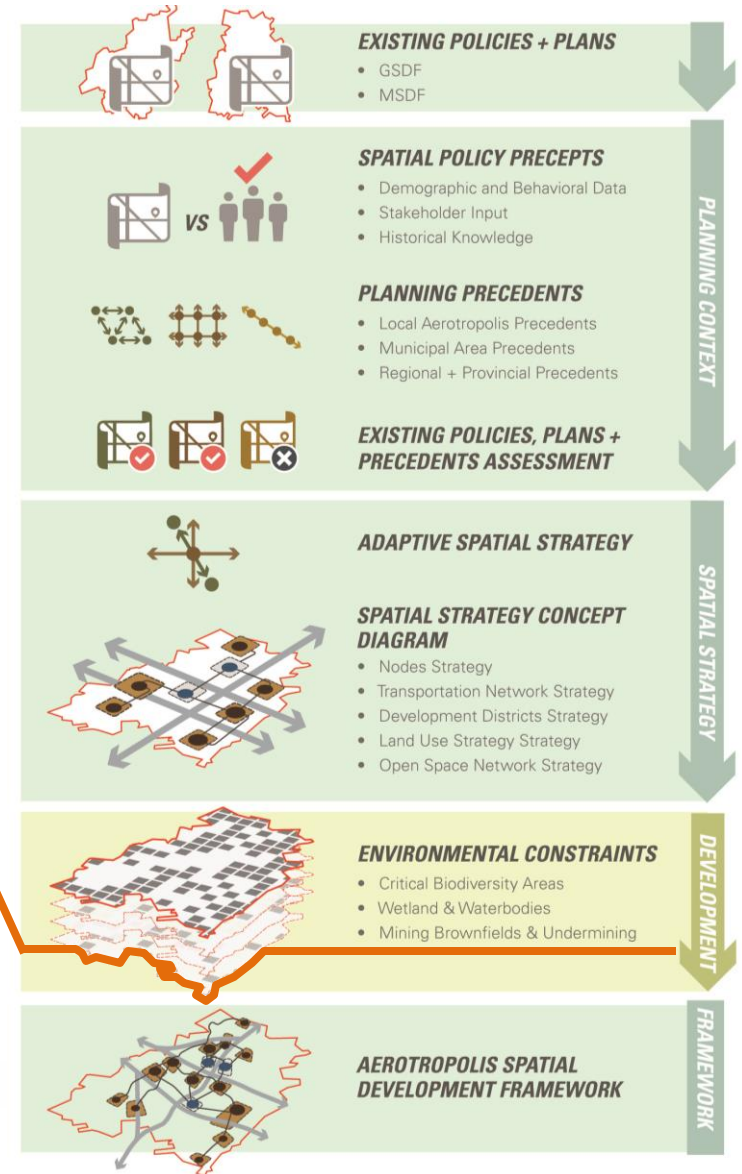
WE ARE HERE

ECONOMIC STRUCTURE

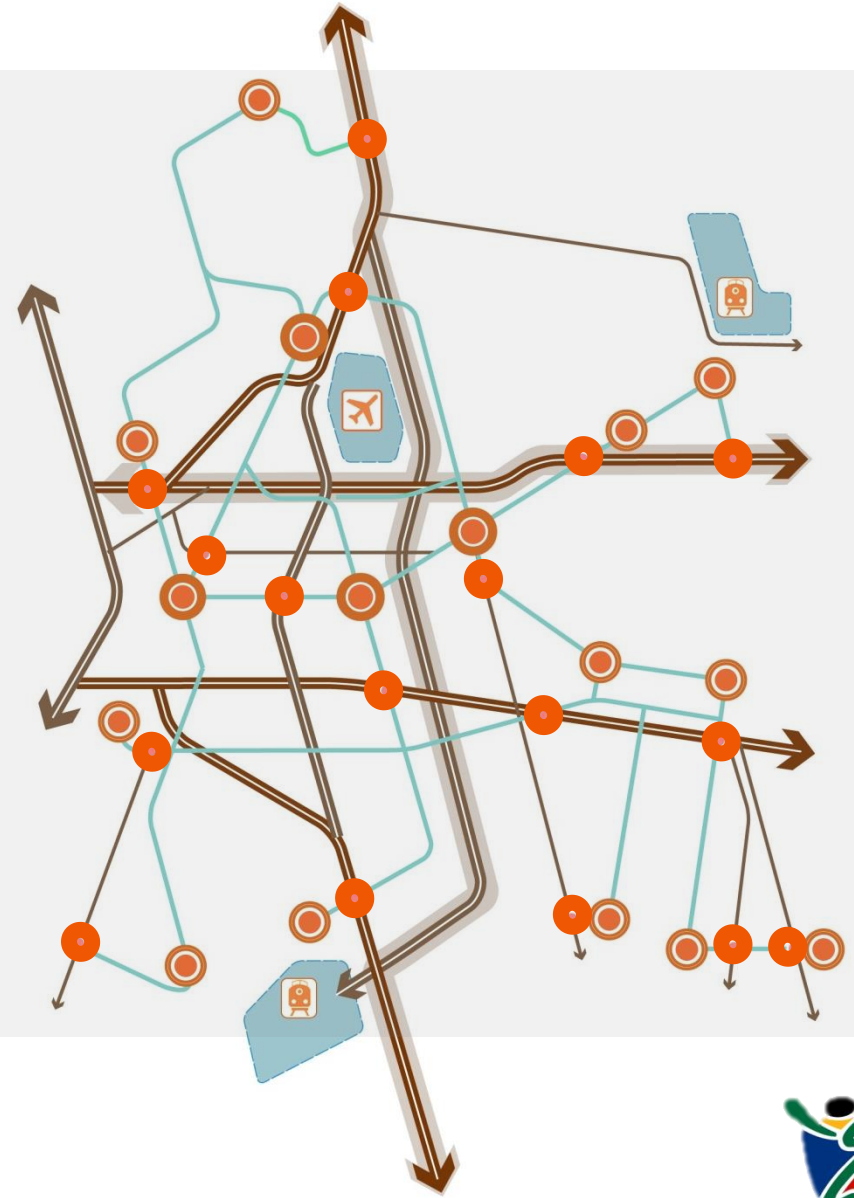
SPATIAL FRAMEWORK

DEVELOPMENT STRATEGY

CAPACITY STUDY & SITE DESIGNS

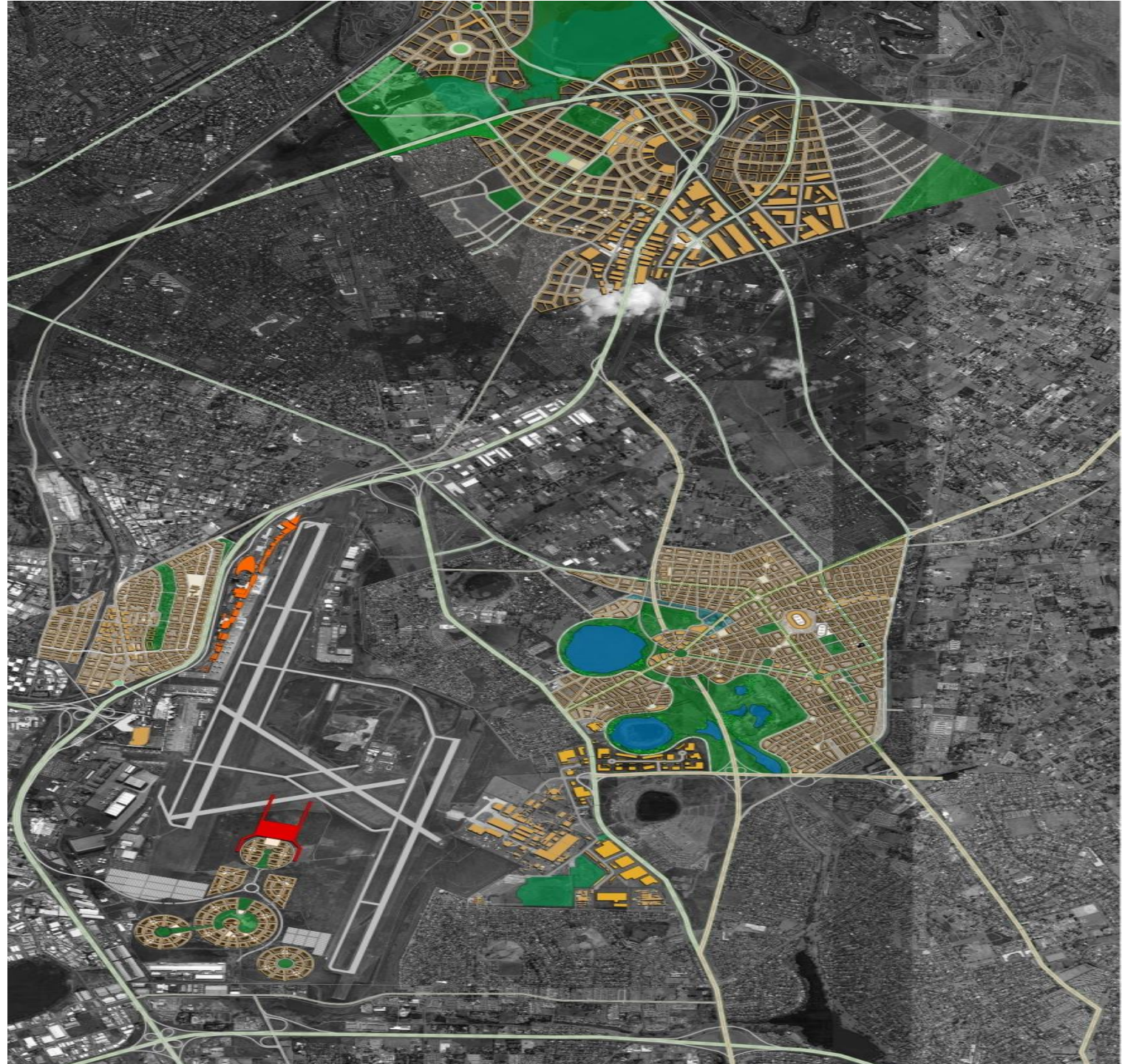


Adaptive spatial Policy





New Vision



NEW CENTERS OF ECONOMIC AND SOCIAL ACTIVITY

VISITING PROFESSIONALS + INVESTORS
TOURISM, TRAINEES, TOURNAMENTS
HIGH-VALUE LIGHTWEIGHT CARGO

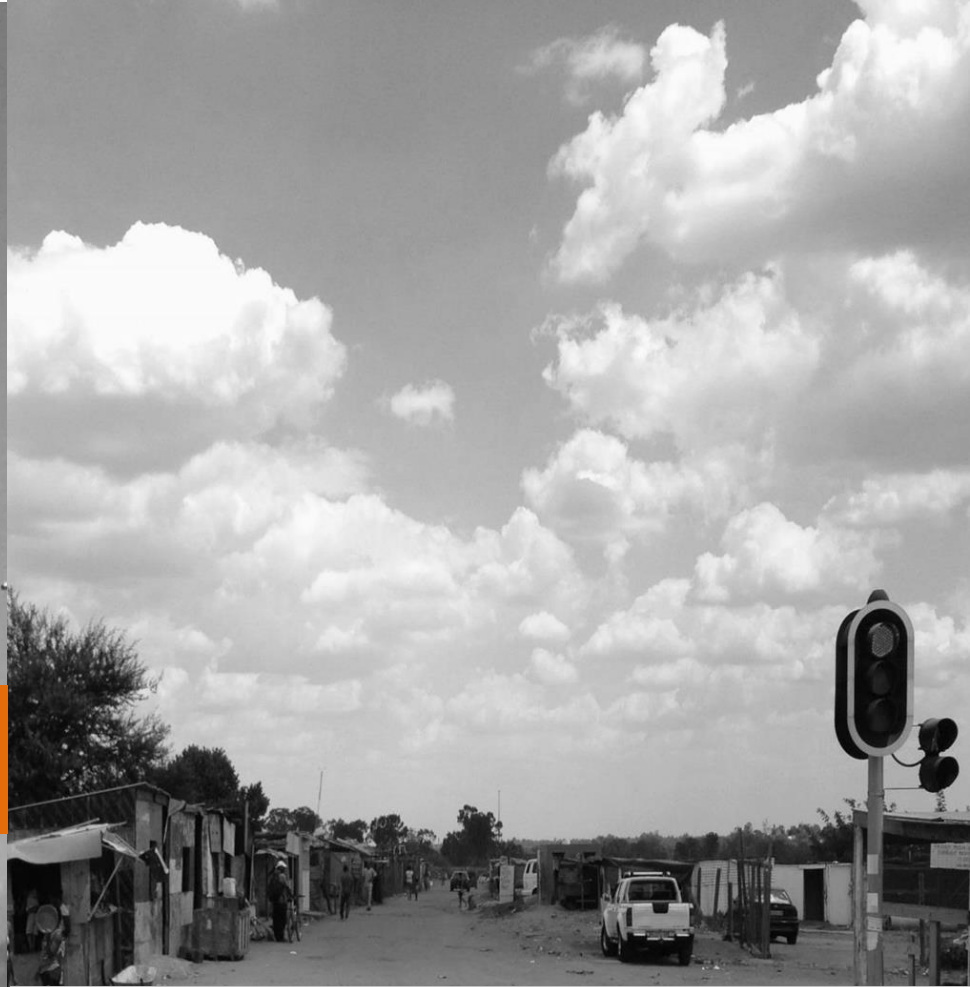
AIRBORNE "ECONOMIC INFUSION"

Situated at major intersections and strategic locations distributed across the Ekurhuleni Metropolitan Municipality, the Aerotropolis Hubs are new centers of economic activity and community focal points, emphasizing a mixture of uses and garnering priority for public and private investment. Each hub features and economically supports the most complex key catalytic projects and roadway improvements; they are intended as the fullest demonstration of master plan principles prescribing a walkable, sustainable, resilient, aspirational, and international aerotropolis.



CREATING A WORLD-CLASS GATEWAY TO GLOBAL MARKETS

Thank you



S'busiso Dlamini Pr Pln
Divisional Head: Metropolitan Spatial Planning

Department of City Planning



Telephone : 011 999 4044
Facsimile : 086 525 1746
E-mail : Sbusiso.dlamini@ekurhuleni.gov.za
Website : www.ekurhuleni.gov.za
Postal : Private Bag X3, Kempton Park, 1600
Physical : Cnr Kempton Park Road & Margaret Avenue