



ICAO

Symposium on Assistance to Aircraft Accident Victims and their Families (AAAVF2021)

1 to 3 December 2021
Canary Islands, Spain

Hosted by



MINISTERIO
DE TRANSPORTES, MOVILIDAD
Y AGENDA URBANA

Speakers

Rita Domínguez Monzón

Contact Person PECO, Civil Protection Unit

Ernesto Robayna Fernández

LPA Airport Victim Assistance Responsible, AENA

Gonzalo Delgado Nordmann

LPA Airport Victim Assistance Responsible, AENA



AIRPORT EXPERIENCE

ASSISTANCE TO AIRCRAFT ACCIDENT VICTIMS AND THEIR FAMILIES

Gran Canaria Airport

Global Impact

Although tasks are carried out locally, our overall performance has global implications.

Airports are a very small piece of the assistance puzzle. However, during the initial hours of an aircraft accident, our human force, infrastructure, and readiness are of great importance to victim families and organizations.

At this stage, airports may be tagged as real **“first responders”**.

Aircraft Accident

From, To, Transit at LPA

Other?

Emergency Response

Emergency plan activation and responsibility depending on accident geographical location.

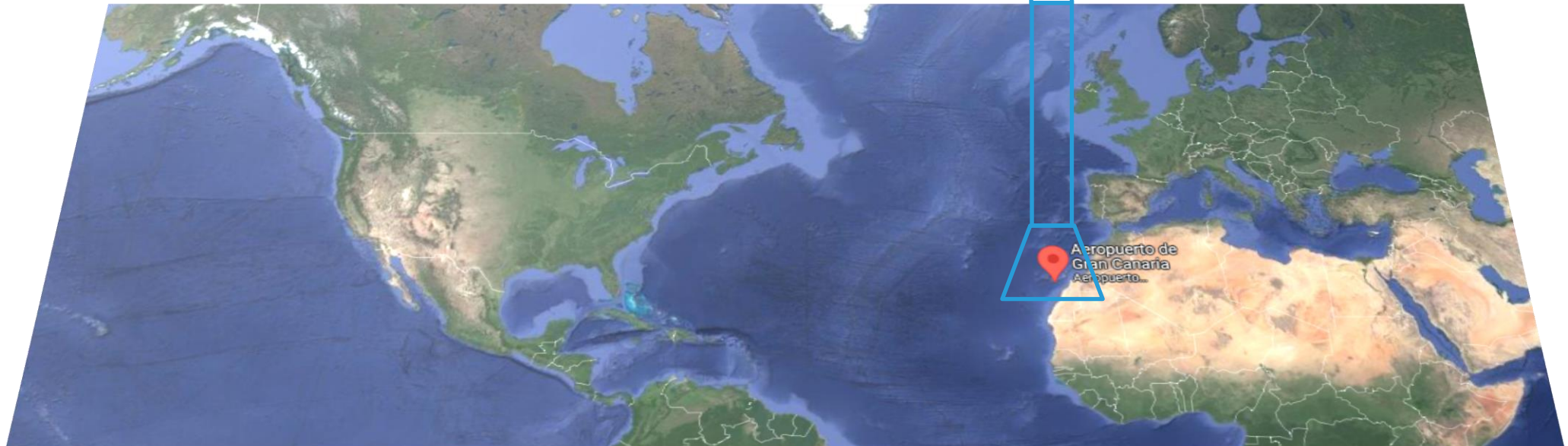
Victims & Families Assistance

Synergy: interaction and cooperation of local, national, international organizations.

(Aena, Airline, Local Authorities, Embassies, Families, Representatives, Administration).

Training

Emergency drills and procedure enhancement.

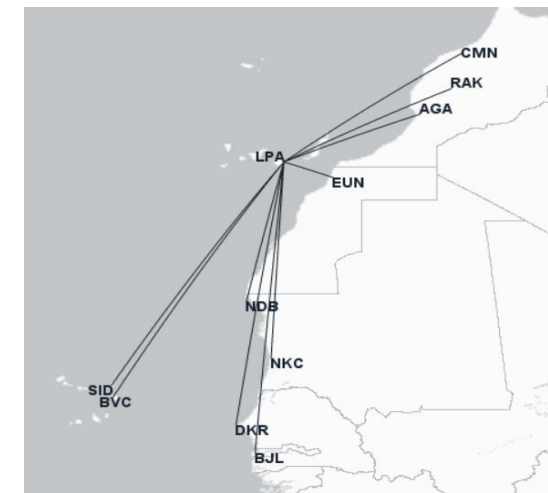
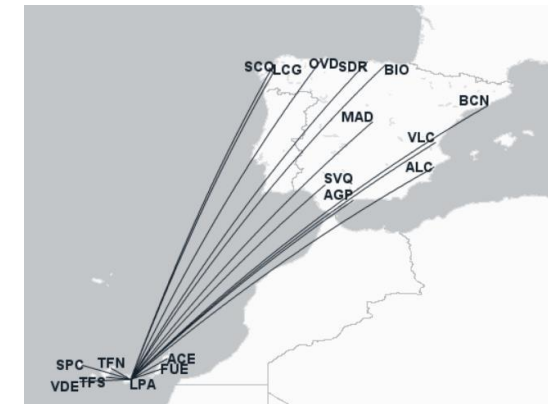
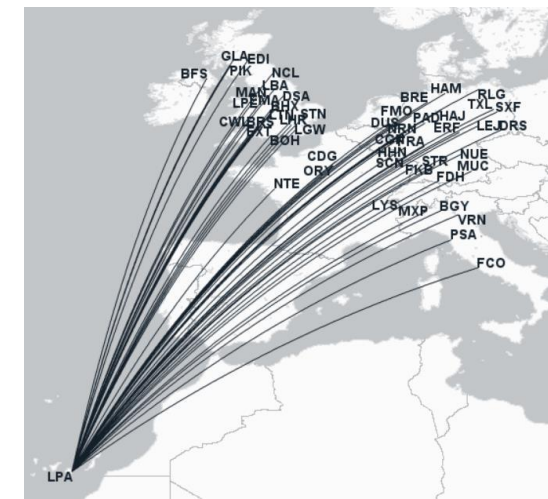
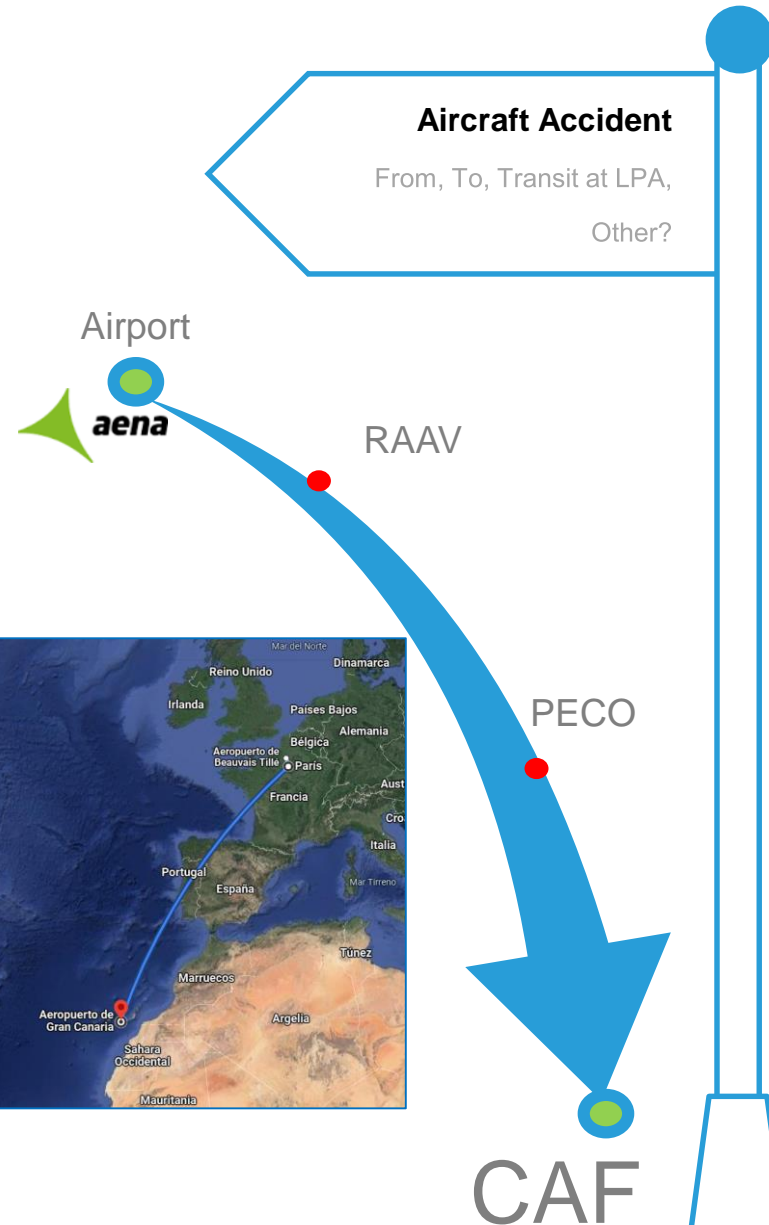


Organization

The airport is directly involved in the assistance for any accident from, to, or in transit at LPA.

It integrates itself with governmental emergency plans through its own emergency plan and procedures, specifically designed to include assistance to victims and their families.

Our procedures provide the means and actions necessary to activate family assistance facilities, and to **coordinate** with the Family Attention Center (CAF) activated by the Contact Person (PECO) of the Administration. This happens at the proposal of the airline involved in the accident, to redirect the family members who show up at the airport.



Liaison

Having activated the airport emergency plan and procedures due to an accident, a huge workforce is on site to provide a quick response to the emergency, and provide any necessary means to other organizations for an efficient assistance.

Airport based teams respond in the event the accident occurs within its perimeter, until external units arrive to take the lead.

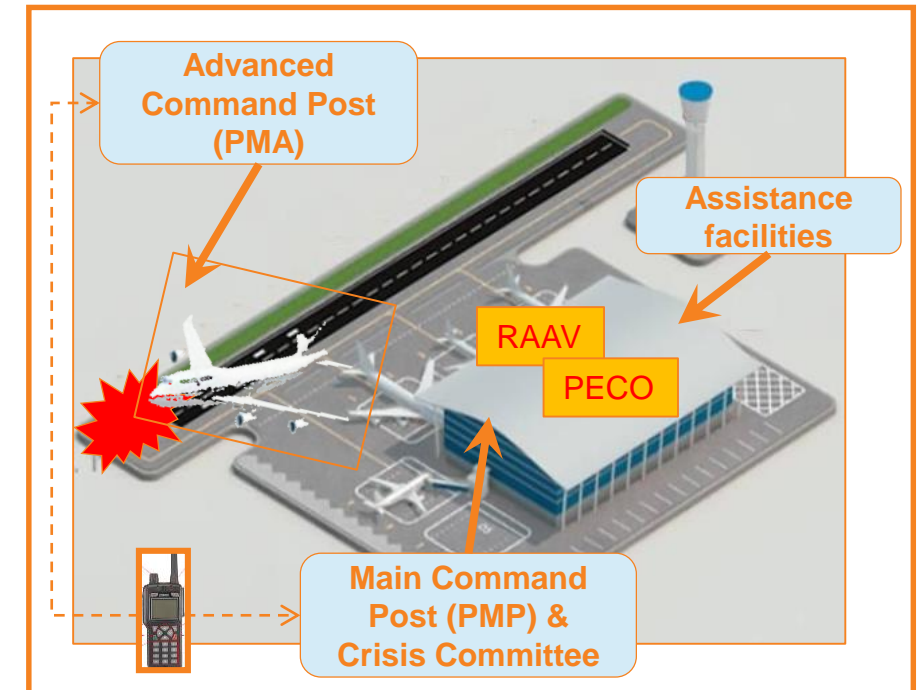
These include Civil Protection Unit, Red Cross, Airlines, Psychological teams...

The airport responsible for this tasks is the **RAAV**, who works in close liaison with the Family Assistance Center, led by the **PECO**.



Emergency Response

Emergency plan activation and responsibility depending on accident geographical location.



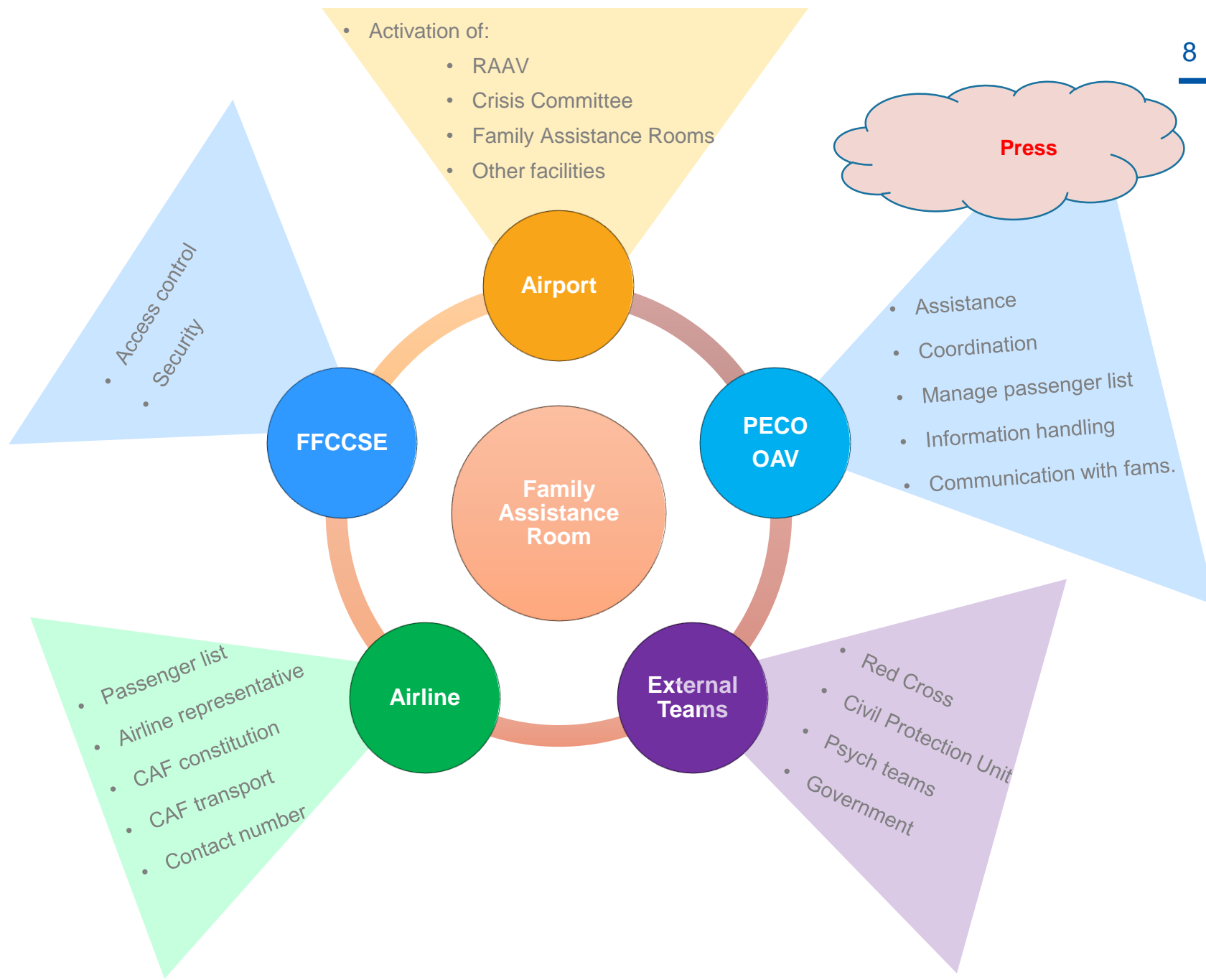
CAV Oficina de asistencia
a las víctimas de
accidentes aéreos

Families

Victims & Families Assistance

Synergy: interaction and cooperation of local, national, international organizations. (Aena, Airline, Local Authorities, Embassies, Families, Representatives).

AAAVF202
1



Training

Global Impact

Organization

Liaison

Families

Training

Emergency drills and procedure enhancement.

Training



Training

Emergency drills and procedure enhancement.



Thank You

