



# O'Hare International Airport

*A Leader For Moving People and Products*

## Presentation to ICAO Air Cargo Development Forum

Rosemarie S. Andolino  
Commissioner  
Chicago Department of Aviation

September 4, 2014



Rahm Emanuel  
Mayor



Rosemarie S. Andolino  
Commissioner

## CHICAGO DEPARTMENT OF AVIATION



**\$1 BILLION  
BUDGET**

**\$45 BILLION**  
IN ANNUAL ECONOMIC ACTIVITY

**1.4 million tons  
of cargo in 2013**

**87 million  
PASSENGERS**

**540,000  
JOBS**

**1,500**  
CDA EMPLOYEES

**1.1 million  
OPERATIONS**





## O'HARE AT A GLANCE

- ✈ Nonstop service to over 220 cities worldwide
- ✈ 53 passenger carriers operating out of 189 gates
- ✈ Nearly 67 million passengers served in 2013
- ✈ 883,000 operations in 2013

***BEST AIRPORT IN NORTH AMERICA***  
10 CONSECUTIVE YEARS



3

## O'HARE CARGO AT A GLANCE

- ✈ **Rankings:** #7 U.S. cargo airport and #20 in world in 2012 by tonnage
- ✈ **Tonnage:** 1.4 million tons of air cargo handled in 2013
- ✈ **Real Estate:** Over 3 million s.f. of on-airport cargo facilities with ramp parking for over 40 jumbo freighter aircraft
- ✈ **Value:** Number 2 U.S. cargo airport by value of shipments (\$115 Billion)

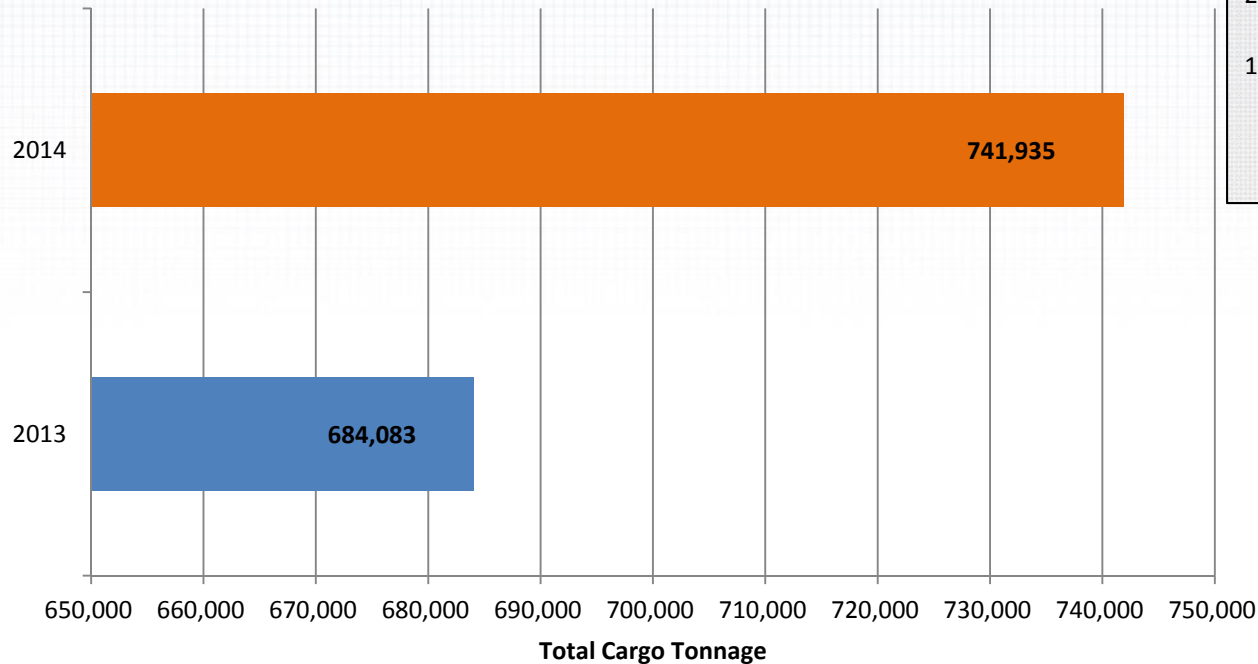




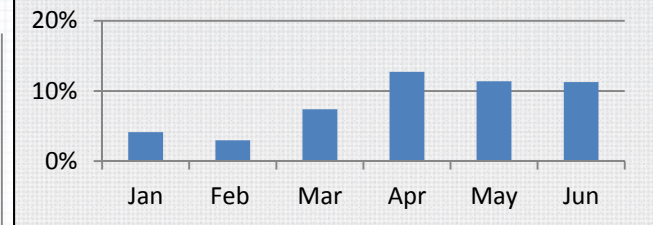
## CARGO TONNAGE INCREASE IN 2014

Total Cargo Tonnage (Freight + Express) is up 8.5% through June 2014 over the same period in 2013

**Total Cargo Tonnage (Freight + Express)  
January - June**



**Monthly Cargo Tonnage Growth  
over 2013**



11.8% growth in 2Q  
2014 over 2Q 2013

## O'HARE NONSTOP INTERNATIONAL ROUTES



53 passenger carriers offer service to  
60 international destinations





## ORD INTERNATIONAL AIR CARGO

- ✈ 30 freighter airlines
- ✈ 30 widebody passenger airlines
- ✈ Over 45 international destinations



## O'HARE CARGO CARRIERS





## O'HARE CARGO CARRIERS

American Airlines Cargo



BRITISH AIRWAYS  
WORLD CARGO



FedEx

POLISH AIRLINES  
**LOT**

  
cargolux

SOUTHERN AIR

 **Lufthansa Cargo**  
The business to business class.

**EVA AIR** 

**WORLD**  
AIRWAYS

AIR FRANCE  **KLM**  
CARGO CARGO

 **AeroUnion**

**ATLAS AIR** 

**QATAR**  
AIRWAYS   
الخطوط الجوية القطرية

## CHICAGO – A CENTER FOR TRADE

- ✈ Center of one of the largest trading areas in the world
- ✈ 30% of North American consumers within a one day truck drive
- ✈ 50% of all U.S. rail freight passes through Chicago
- ✈ One of world's top five intermodal container handlers and #1 in Western Hemisphere

U.S. MANUFACTURING PLANTS  
AND DISTRIBUTION CENTERS



U.S. RAIL FREIGHT TRAFFIC INTENSITY





# BUILDING OUR GLOBAL COMPETITIVENESS







## PHASE 1 & COMPLETION PHASE

**9L-27R**  
Completed Nov. 2008

**Taxiway Z**  
Completed Oct. 2013

**NATCT**  
Completed Nov. 2008

**CRCF/ATS Extension**  
4<sup>th</sup> Quarter 2015

**9C-27C**  
2020

**9R-27L Extension**  
2020

**Taxiway LL (Part 1)**  
4<sup>th</sup> Quarter 2015

**Taxiway LL (Part 2)**  
2018

**Taxiways K & L**  
4<sup>th</sup> Quarter 2015


**10L-28R Extension**  
Completed Sept. 2008




**10C-28C**  
Completed Oct. 2013

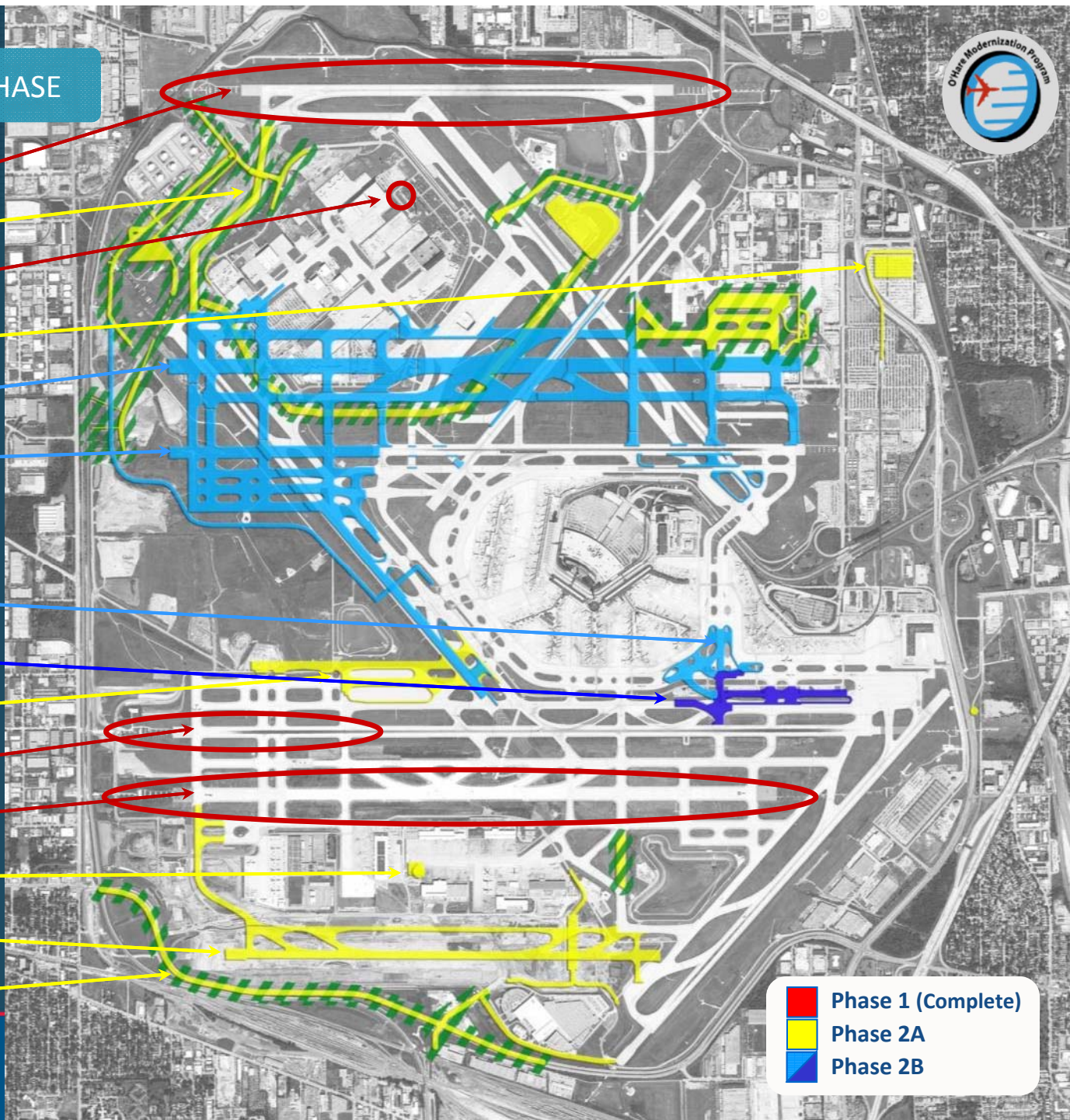
**SATCT**  
4<sup>th</sup> Quarter 2015

**10R-28L**  
4<sup>th</sup> Quarter 2015

**Irving Park Rd. Relocation**  
Completed Nov. 2012

 Highlighted areas designate completed Phase 2A projects

 Phase 1 (Complete)  
 Phase 2A  
 Phase 2B





## OMP – FED EX AND UNITED CARGO RELOCATIONS

- ✈ OMP designed and constructed new facilities to replace FedEx and United Airlines cargo buildings for new Runway 10C/28C
- ✈ Both facilities feature green roofs
- ✈ FedEx green roof among largest in the world



13



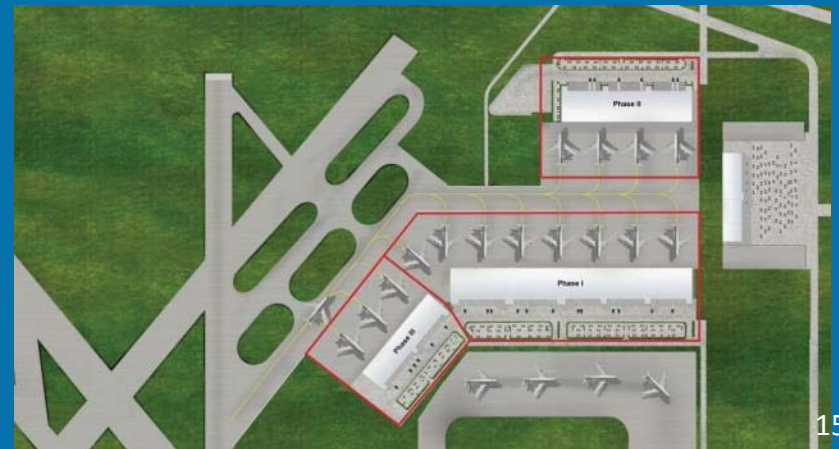
# O'HARE NORTHEAST CARGO CENTER





## NORTHEAST CARGO CENTER

- ✈ Nearly \$200 million project
- ✈ 65 acres, 820,000 s.f. of facility space
- ✈ Close access to major interstate highways
- ✈ Three buildings over three phases
- ✈ Green building commitment by developer Aeroterm



15



## NORTHEAST CARGO BENEFITS

- ✈ More capacity for newer B747-8F super jumbo jet freighters
- ✈ Keeps O'Hare competitive and attractive to cargo commerce for decades to come
- ✈ Creates 1,200+ construction jobs and 1,200+ permanent jobs. Anticipated to create an additional 10,000 regional jobs



16



## DHL GLOBAL FORWARDING CENTER

- ✈ \$35 million facility
- ✈ 53,000 s.f. of office space and 423,030 s.f. of warehousing space
- ✈ Will be the largest DHL Global Forwarding Center in U.S.



17



## ORD PERISHABLE CARGO CENTER

- ✈ Develop and operate an on-airport center for time-sensitive air cargo (flowers, food and medicine)
- ✈ Center would be 1st of its kind in Chicago





# WORLD ROUTES CHICAGO 2014



## World Routes 2014

The 20th World Route Development Forum

Chicago, Illinois, USA • 20 - 23 September 2014

[www.routeschicago2014.com](http://www.routeschicago2014.com)



AVIATION'S LEADING SUSTAINABILITY FORUM



## *Airports Going Green*

NOVEMBER 3-5, 2014 | THE WESTIN RIVER NORTH



VISIT OUR WEBSITE: FLYCHICAGO.COM



[O'HARE](#) [MIDWAY](#) [BUSINESS WITH CDA](#) [CHOOSE CHICAGO](#)

Search site



Select Language



Welcome to the Chicago Department of Aviation  
**Connecting You Everywhere**

**O'HARE**  
INTERNATIONAL  
AIRPORT



**MIDWAY**  
INTERNATIONAL  
AIRPORT



Rahm Emanuel, Mayor  
Rosemarie S. Andolino, Commissioner  
© 2013 Chicago Department of Aviation



AWARENESS &  
ASSISTANCE



AIRPORTS  
GOING GREEN



SIGN UP FOR  
WEB ALERTS



Chicago 2014  
World Route Development Forum  
[RoutesChicago2014.com](#)

21



CONNECTING THE WORLD  
TO CHICAGO