

[www.vision-box.com](http://www.vision-box.com)



# Integrated Biometric Solutions for Identity Management and Border Security

Miguel Leitmann

Senior Vice-President for Marketing and  
Sales, Vision-Box

**vision-box**  
identify your world

ICAO Regional Seminar on MRTDs, Biometrics and Border Security

[www.vision-box.com](http://www.vision-box.com)

- Founded in 2001 by a group of International Specialists from INETI, a Portuguese R&D facility and DLR, a leading German aerospace Lab.
- Highly specialised in biometric enrolment and verification, with a focus on border management and control, with over 300 eGates deployed.
- Manufacturers of security solutions covering surveillance, video analytics, access control and identity management
- Complete Solution Provider
- Pioneers in Automated Border Control – the first ever ICAO compliant e-gate



[www.vision-box.com](http://www.vision-box.com)



- Global Leader in Automated Border Clearance Systems – more than 300 gates deployed across Portugal, UK, Finland, Netherlands, Brazil, Venezuela and with pilots ongoing across the globe.
- Over 2000 enrolment stations deployed worldwide. Latest success in Sweden
- Headquartered in Lisbon at a purpose built R&D facility. Offices in UK, Qatar and Brasil
- Innovation centre of excellence.
- *International Entrepreneur of the Year 2009 – Ernst and Young,*
- *Deloitte Technology Fast 500 - 2010*

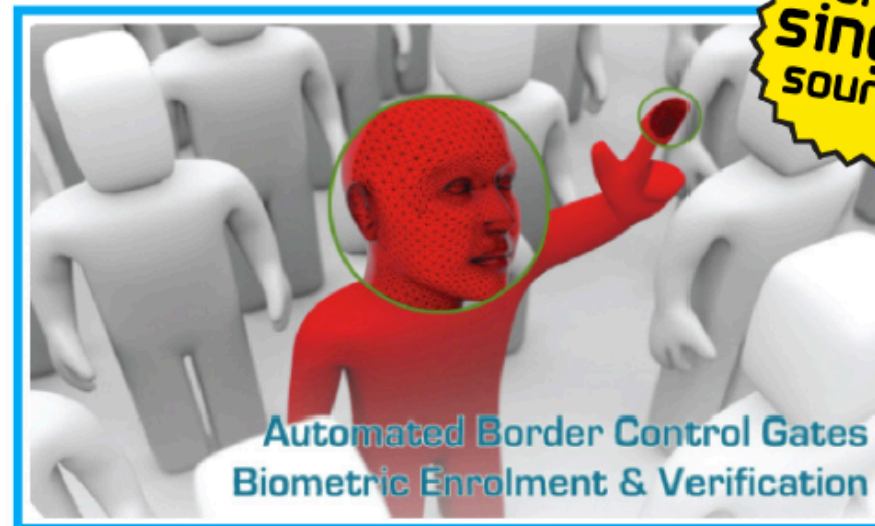
**vision-box**  
identify your world





www.vision-box.com

# Extremely Fast Time to Market



ONE  
**single**  
SOURCE

**we develop**

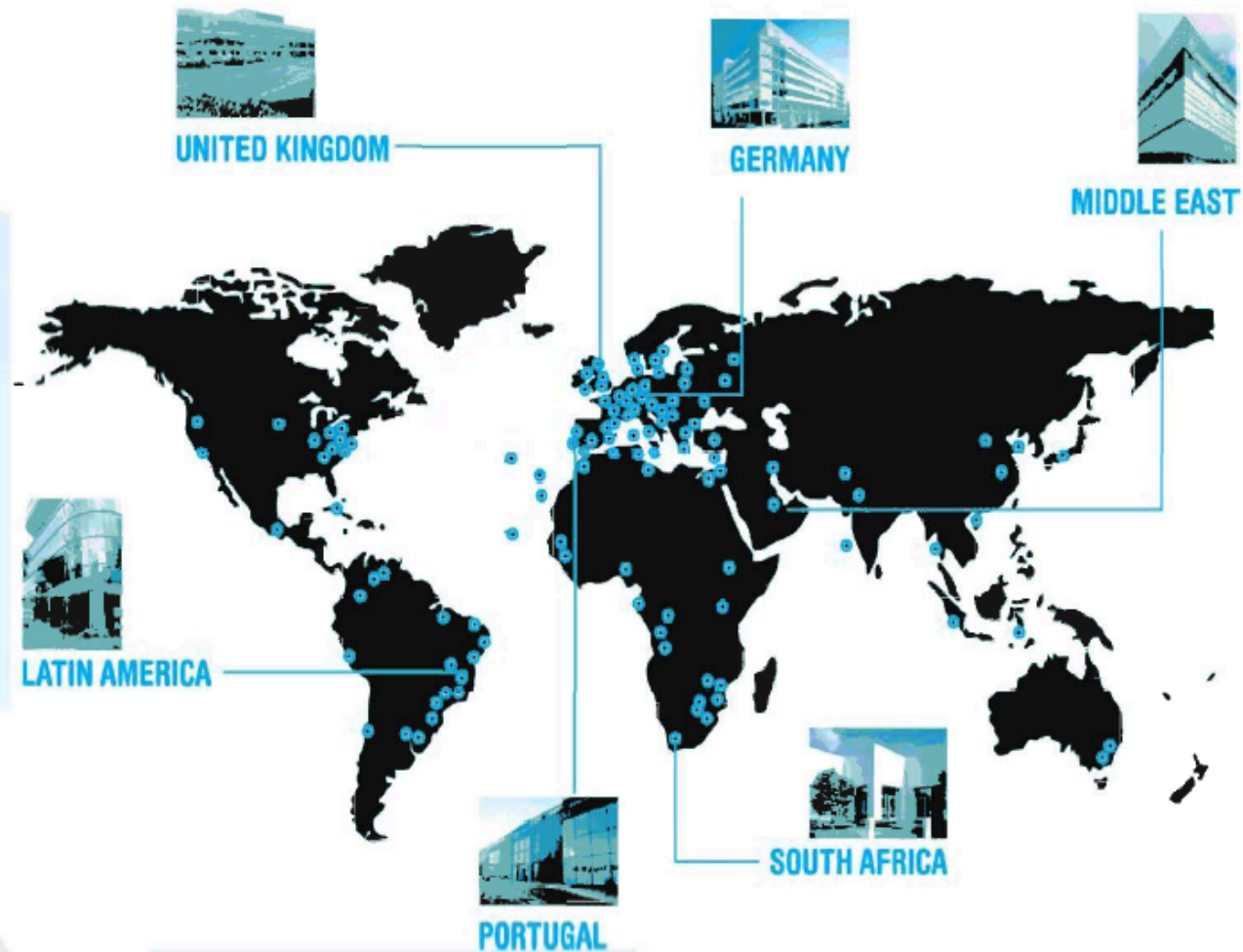
**we produce**

**we deliver**

## trusted fitted solutions

**vision-box**  
identify your world

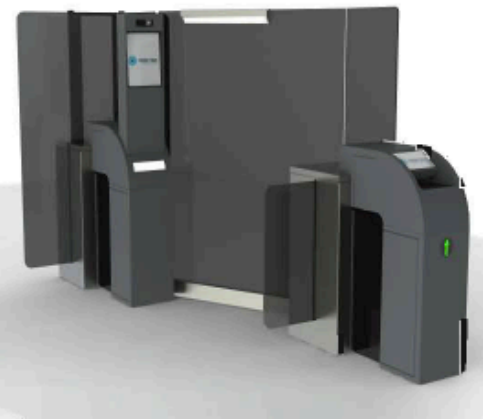
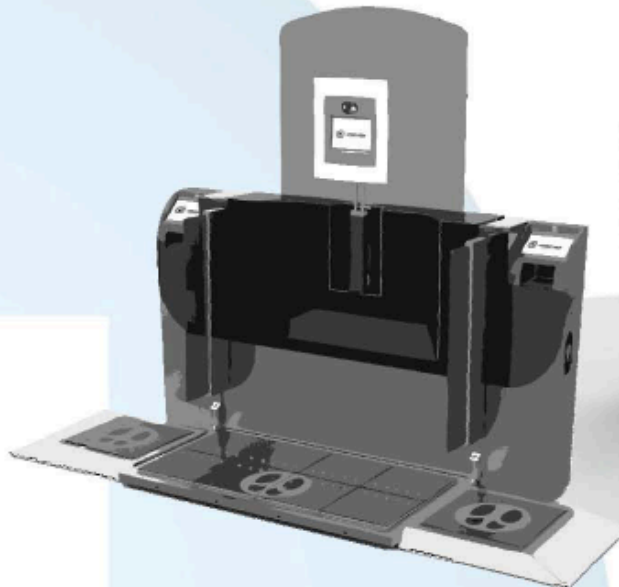
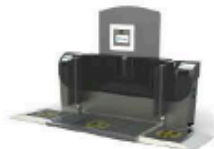
[www.vision-box.com](http://www.vision-box.com)



**vision-box**  
identify your world

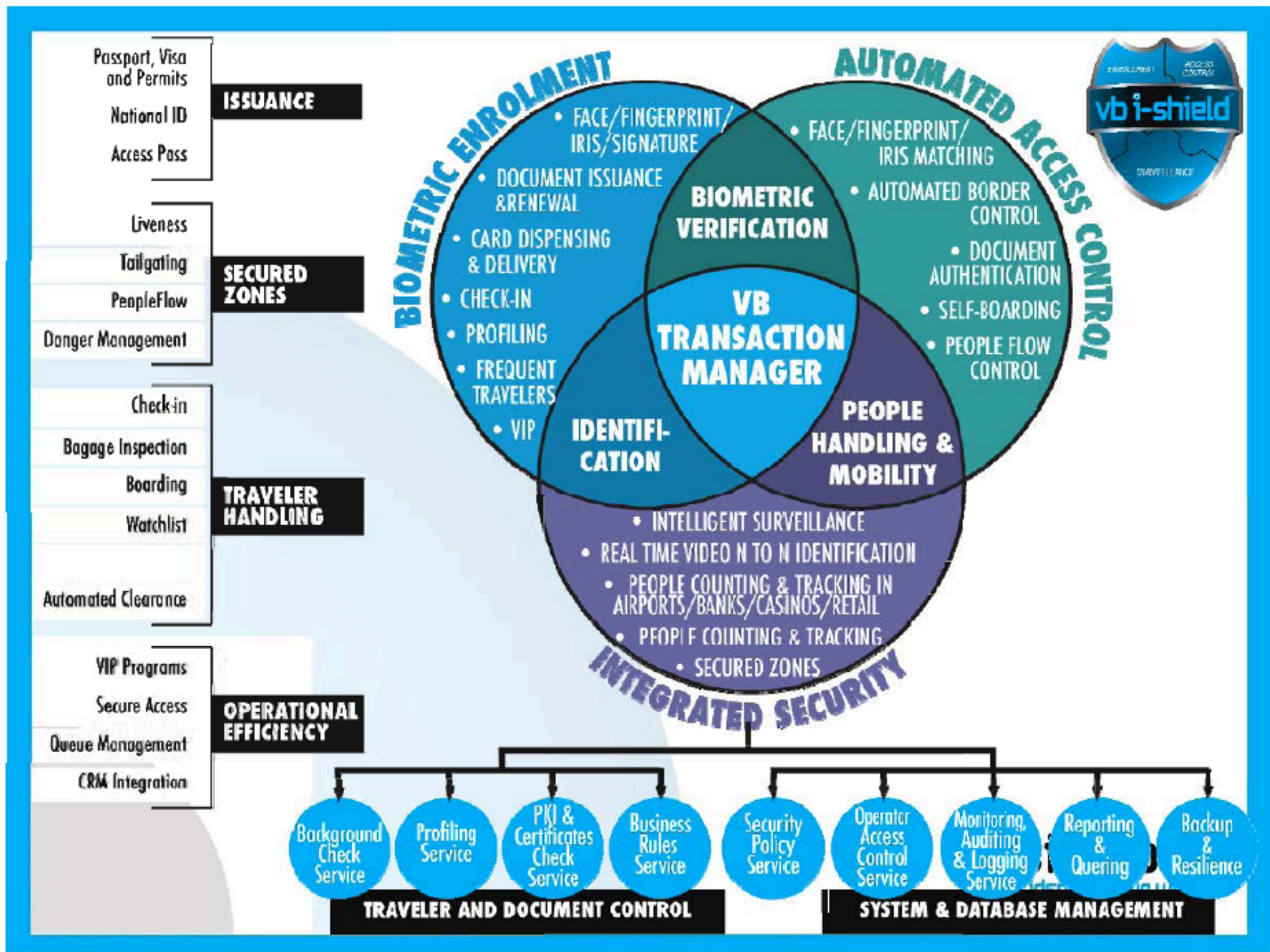
- First ever deployed ICAO compliant face-matching gate has become world wide reference
- Over 100M registered travellers through Passports
- Over 10M cleared Passengers in 20 airports
- Over 200.000 checked passengers per month in one airport
- Over 300 ABCs with face matching deployed
- Over 2.000 deployed enrolment systems
- 95% Market Share in Europe

[www.vision-box.com](http://www.vision-box.com)

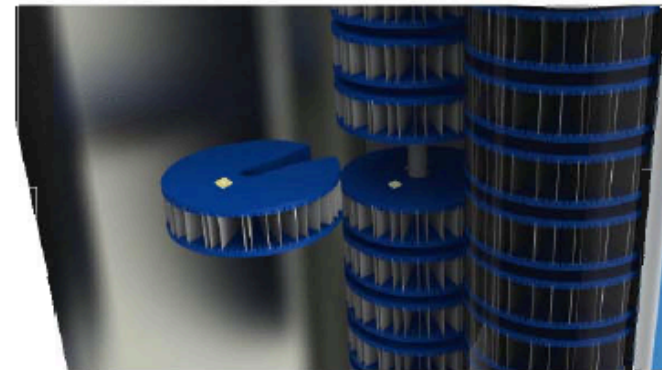


**vision-box**  
identify your world





[www.vision-box.com](http://www.vision-box.com)



**vision-box**  
identify your world

[www.vision-box.com](http://www.vision-box.com)



**POR LISBOA**  
PROGRAMA OPERACIONAL REGIONAL

**QREN**  
QUADRO DE REFERÊNCIA  
ESTRATÉGICO  
NACIONAL  
PORTUGAL 2007-2013



UNIÃO EUROPEIA  
Fundo Europeu de  
Desenvolvimento Regional

**vision-box**  
identify your world