



INTERNATIONAL CIVIL AVIATION ORGANISATION
AFI PLANNING AND IMPLEMENTATION REGIONAL GROUP (APIRG)
AFI OPMET MANAGEMENT TASK FORCE (AFI OPMET MTF)
THIRD MEETING (AFI OPMET MTF/3)
(Dakar, 27-28 June 2011)

Agenda Item 3 c: Join AMBEX/ICD implementation report (including the finalization of the AFI OPMET data catalog (Rec. 2/14); Time validation criteria for data reception (Dec. 2/4) and monitoring Time Frames (Dec.2/5))

AFI ICD IMPLEMENTATION REPORT
(Presented by Senegal and South Africa)

SUMMARY

The paper presents a report on the development of the draft OPMET time validation criteria, monitoring time frames and the data catalogues finalization by both RODB Pretoria and Dakar.

1. Introduction

1.1 The AFI OPMET MTF/2 meeting held in Johannesburg, South Africa formulated decision 2/4 and 2/5 which called for the development of time validation criteria as well as monitoring time frames respectively. Recommendation 2/14 was also formulated calling for the finalization of the OPMET data catalogues by RODBs (Pretoria and Dakar).

2. Discussions

2.1 The meeting may recall that the two RODBs were required to jointly develop a draft time validation criteria for reception of data for inclusion in the AFI AMBEX Handbook. In addition, the monitoring statistics since 1st January 2011 were to be presented at this meeting.

2.2 Time validation criteria for data reception has been implemented by the two RODBs (Dakar and Pretoria); see **Appendix A** to this working paper. The validation criteria implemented by Pretoria RODB is based on the criteria developed by the BMG for the EUR. The meeting will note that although the validation is done at both the RODBs, the criteria used may not be the same.

2.3 The RODB Dakar and Pretoria have implemented the OPMET data monitoring time frames from the 1st January 2011 as per decision 2/5 of the AFI OPMET MTF/2. The meeting is invited to note the results of monitoring done by Dakar RODB, **Appendix B** to the working paper. The results of the monitoring done by Pretoria RODB will form part of the annual report on the implementation of the AMBEX Scheme.

2.4. OPMET Data catalogues have been developed and implemented by both the RODBs. The catalogues implemented by both Dakar and Pretoria are aligned with the latest AFI Interface Control Document (ICD). The OPMET data catalogues developed by Dakar RODB is included in **Appendix C**. The OPMET Data catalogues implemented by Pretoria RODB are accessible via the following link:

<http://aviation.weathersa.co.za/#showopmetdatabank?action=rqm>

3. Recommendation

3.1 As mentioned in 2.2 above, the validation criteria developed by the BMG were designed for EUR region. In order to develop the AFI validation criteria for inclusion in the AFI AMBEX Handbook, it may be necessary to re-invent the wheel but modify the existing criteria to serve the needs of the AFI Region.

Recommendation 3/XX- Modification of the BMG Time Validation Criteria

That the time validation criteria developed by the BMG for the EUR be modified to align it with the Air Navigation Plan (ANP) for the AFI Region and included in the AFI AMBEX Handbook for implemented by both Dakar and Pretoria.

4. Actions by the meeting

3.1 The meeting is invited to:

- a) note the work done by RODB Dakar and Pretoria in the implementation of the validation and monitoring of OPMET data and;
- b) decide on the draft recommendation

APPENDIX A

(Example of data validation by Dakar and Pretoria)

Dakar

Contrôle des données

Requêtes | OPMET | ROBEX | Messages | Circuits

Groupe d'aéroports ou aéroport: WACAF1

Afficher

Imprimer...

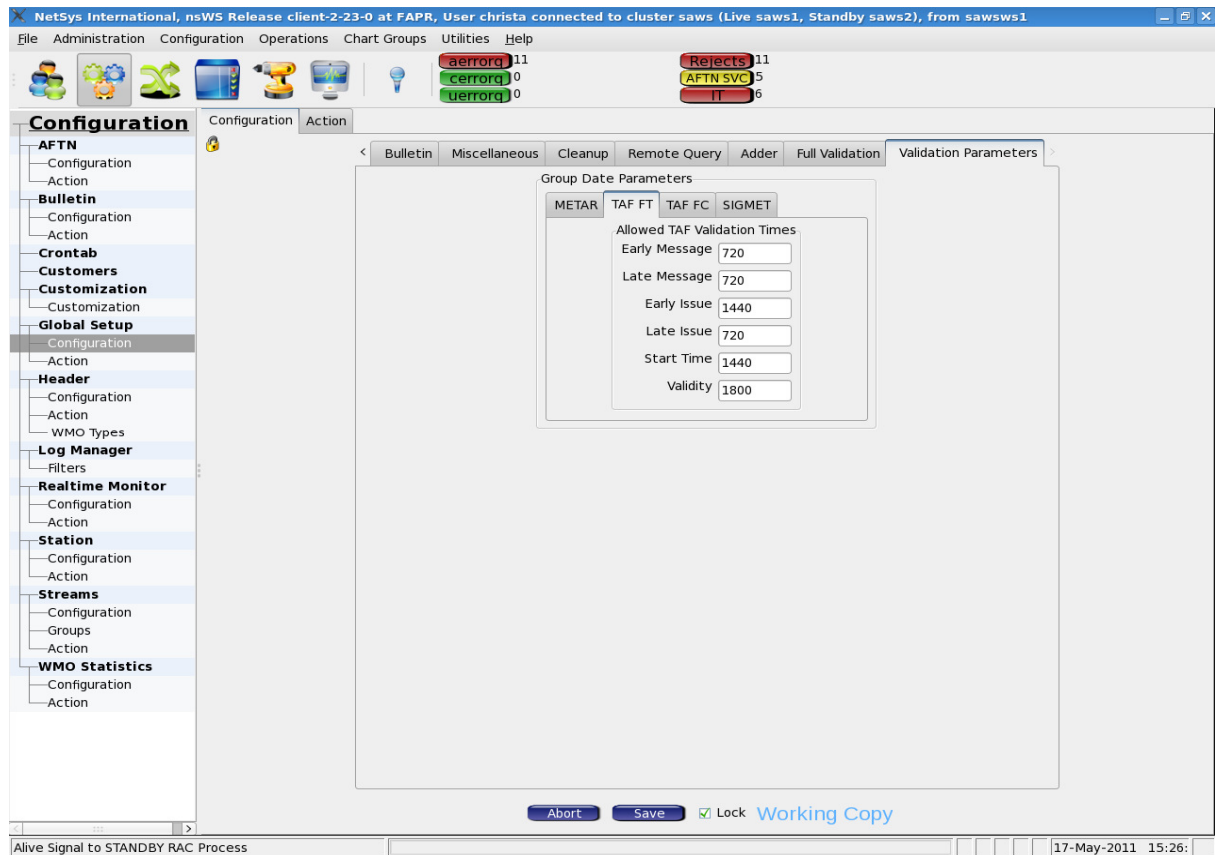
Depuis: 07/05/2011

Jusqu'à: 12/05/2011

Type: ☒ METAR ☐ METAR semi-horaire ☒ TAF ☐ TAF 30H ☐ TAF 24H ☐ TAF 9H

Aéroport	00 <H-60	00 <H	00 >H	06 <H-60	06 <H	06 >H	12 <H-60	12 <H	12 >H	18 <H-60	18 <H	18 >H
DAAG	0	0	6	0	0	6	0	0	6	0	0	6
DAAT	0	0	6	0	0	6	0	0	6	0	0	6
DABB	0	0	7	0	0	6	0	0	6	0	0	6
DABC	0	0	6	0	0	6	0	0	6	0	0	6
DABS	0	0	6	0	0	6	0	0	6	0	0	6
DAON	0	0	6	0	0	6	0	0	6	0	0	6
DAOO	0	0	6	0	0	6	0	0	6	0	0	6
DAUA	0	0	6	0	0	6	0	0	5	0	0	5
DAUG	0	0	6	0	0	6	0	0	6	0	0	6
DAUH	0	0	6	0	0	6	0	0	6	0	0	6
DAUI	0	0	6	0	0	6	0	0	6	0	0	6
DAUZ	0	0	6	0	0	6	0	0	6	0	0	6
DBBB	0	6	0	0	4	2	0	5	1	0	5	0
DFFD	0	4	2	0	2	4	0	3	3	0	1	5
DFOO	0	0	6	0	0	6	0	0	6	0	0	6
DGAA	3	3	0	1	4	1	4	2	0	2	3	1

Pretoria



APPENDIX B

(Example of monitoring done by Dakar and Pretoria)

Dakar

tablo_WACAF_AOP_Trimestre_01_2011.pdf - Adobe Reader													
File Edit View Document Tools Window Help													
4 / 6 133% Find													

Pretoria

metdatamon <2>					
	ICAO	Name	Message type	On time	Late
1	FKKR	Garoua	FT	0	1
2	LPHR	Horta/Castel...	FT	1	1
3	FQIN	Inhambane	SA	29	16
4	FXMM	Moshoeshoe...	SA	321	87
5	HKEL	Eldoret	SA	142	154
6	HHAS	Asmara	FT	71	66
7	HTDA	Dar es Sala...	SA	157	149
8	HEBA	Borg El Arab ...	SA	1136	409
9	FDMS	Manzini/Mats...	FT	5	4
10	HLLB	Benina/Beng...	SA	9188	1163
11	FBKE	Kasane	FT	3	3
12	FBSP	Selebi Phikwe	FT	3	3
13	HAAB	Addis Ababa...	SA	3354	657
14	FXMM	Moshoeshoe...	FT	62	48
15	LMML	Malta/Luqa	FT	1	1
16	FBMN	Maun	FT	7	8
17	FWUU	Mzuzu	FT	6	6
18	HKMO	Mombasa	SA	5602	1480
19	HLLT	Tripoli Intl. Air...	FT	697	147
20	HLLM	Mitiga	FT	648	151
21	HLLB	Benina/Beng...	FT	682	151
22	FQCH	Chimoio	SA	940	610
23	FQCH	Chimoio	FT	701	175
24	FQTT	Tete	FT	704	182
25	FQQL	Quelimane	FT	707	178
26	FQNP	Nampula	FT	709	175

APPENDIX C

(Example of data catalogue by Dakar)

NB: This is not a complete catalogue but just an example

01/05/2011

"TTAAii CCCC", "Content"

"FCAJ31 UBBB", "UBBY UBBL UBBN"

"FCAL32 DAAA", "DAAE"

"FCAL33 DAAA", "DAAD"

"FCAL40 DAMM", "DAAE DAAJ DAAP DAAS DABT DAOB DAOF DAOI DAOR
DAUA DAUB DAUE DAUG DAUK DAUI DAUL DAUO DAUT DAUU"

"FCAL41 DAMM", "DAAD DAAV DAAY DAFH DAOY DATM"

"FCAU31 AMMC", "YAMB YBHM YBMA YBRM YCIN YFRT YMHB YMLT YPGV
YPKU YPXM YSDU YSNF"

"FCAU60 AMMC", "YABA YARG YBWX YCAR YDBY YESP YGEL YPKU"

"FCAU61 AMMC", "YBHM YBMA"

"FCAU62 AMMC", "YAYE YBOK YBPN YBUD YBWP YCAS YCBA YCBB YCBP"

"FCAU63 AMMC", "YCIN YFRT"

"FCAU64 AMMC", "YGFN YGLA YGTE YGTH YHID YHUG YJAK YKRY"

"FCAU65 AMMC", "YLEC YLIS YLRE YMAY YMDG YMEK YMEN YMER"

"FCAU66 AMMC", "YMIA YMOR YMTG YMTN YNAR YNBR YNRM YNWN"

"FCAU67 AMMC", "YPGV YPKG"

"FCAU68 AMMC", "YWLM"

"FCBC40 FBSK", "FBFT FBMN FBKE FBSP"

"FCBU31 LBSM", "LBSF LBWN LBBG LBDP LBGO"

"FCBY31 UMMM", "UMBB"

"FCBY31 UMMN","UMBB UMII UMMG UMMM UMOO"
"FCCY31 LCLK","LCLK LCPH"
"FCDJ20 HDAM","HDAM"
"FCDL33 EDZO","EDFM EDLV EDVK"
"FCDL34 EDZO","EDAC EDAH EDGS EDHL EDLN EDMA EDQM EDXW"
"FCDL35 EDZO","EDHI EDJA EDMO EDTD EDTL EDVE"
"FCDL36 EDZO","EDHK ETNL ETNU ETSI"
"FCDL41 EGRR","ETUO"
"FCDN31 EKCH","EKRN EKEB EKRK"
"FCDN32 EKCH","EKVD EKOD EKSJ EKSJ EKVJ"
"FCDN33 EKCH","EKKA EKSP"
"FCDN34 EKCH","EKGF"
"FCEE31 LOWM","UASK UASP"
"FCEO31 EETN","EETN"
"FCEO32 EETN","EEKA EEKE"
"FCFA31 EKCH","EKVG"
"FCFI31 EFHK","EFHA EFHF EFKA EFKK EFMA EFPO EFSI"
"FCFI32 EFHK","EFJO EFLP EFMI EFSA EFUT EFVR"
"FCFI33 EFHK","EFET EFIV EFKE EFKI EFKS EFKT EFSO"